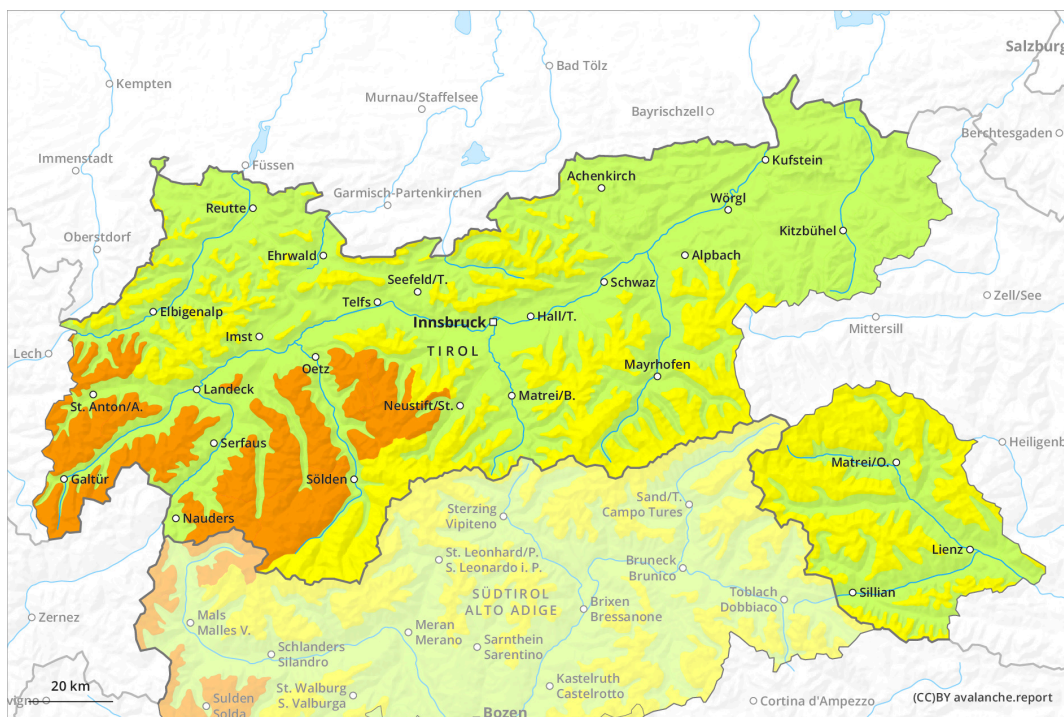
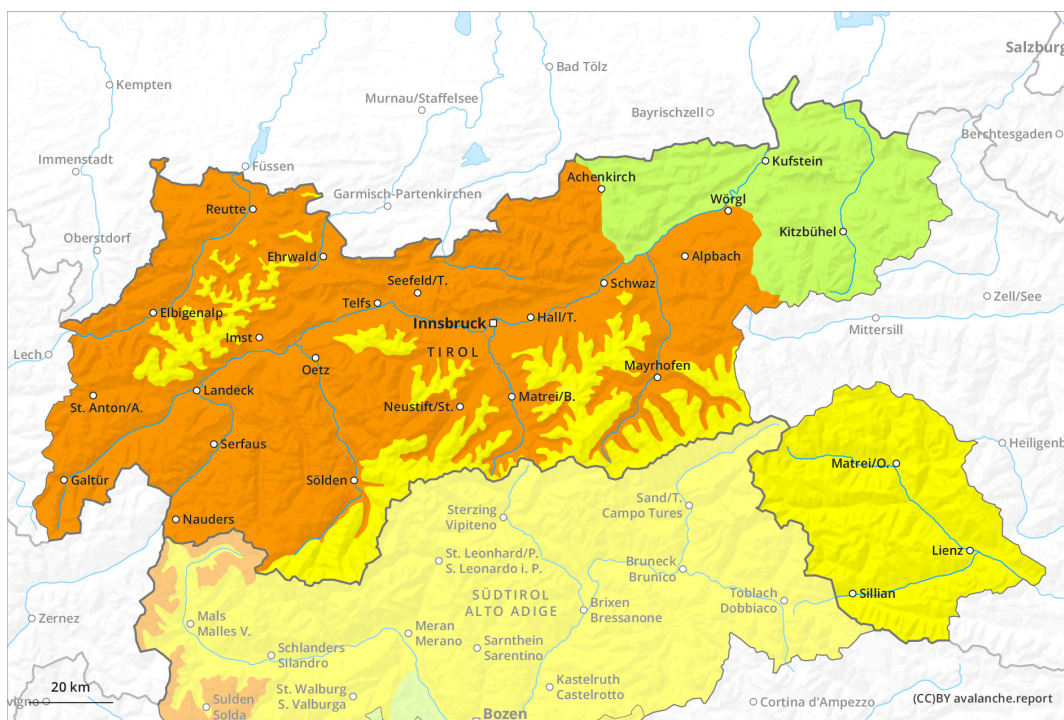




AM

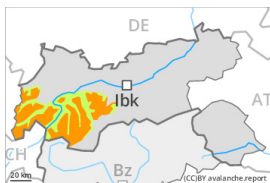


PM



Danger Level 3 - Considerable

AM:



Tendency: Decreasing avalanche danger
 on Sunday 19 03 2023

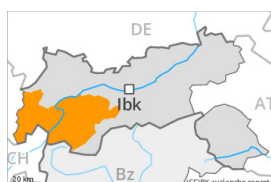


Persistent weak layer



Snowpack stability: **very poor**
 Frequency: **some**
 Avalanche size: **medium**

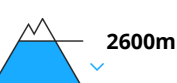
PM:



Tendency: Decreasing avalanche danger
 on Sunday 19 03 2023



Wet snow



Snowpack stability: **very poor**
 Frequency: **some**
 Avalanche size: **medium**



Persistent weak layer



Snowpack stability: **very poor**
 Frequency: **some**
 Avalanche size: **medium**

Significant increase in danger of wet avalanches in the course of the day. Weakly bonded old snow is to be evaluated critically.

Weak layers in the old snowpack can be released even now easily by individual winter sport participants. This applies in particular on very steep shady slopes above approximately 2200 m, as well as on very steep east facing slopes above approximately 2400 m. Caution is to be exercised in particular on little used northeast and east facing slopes. Caution is to be exercised at transitions from a shallow to a deep snowpack.

As a consequence of warming during the day and the solar radiation, the likelihood of wet avalanches during the day being released will increase significantly. This applies especially on steep southeast, south and west facing slopes below approximately 2600 m. In particular in steep rocky terrain more small to medium-sized loose snow avalanches are to be expected. In addition an increasing number of gliding avalanches are possible. Backcountry tours should be concluded timely.

Snowpack

Danger patterns

dp.10: springtime scenario

dp.1: deep persistent weak layer

The weather was very mild over a wide area. The wind slabs have bonded quite well together. Faceted weak layers exist in the old snowpack, especially on shady slopes above approximately 2200 m, as well as on east and west facing slopes above approximately 2400 m.



The surface of the snowpack has frozen to form a strong crust and will soften during the day. Sunshine and high temperatures will give rise as the day progresses to increasing softening of the snowpack. The spring-like weather conditions will give rise to a loss of strength within the snowpack in particular on steep west facing slopes below approximately 2600 m.

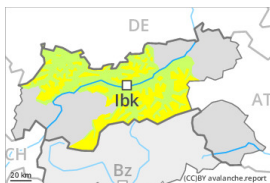
Only a small amount of snow is lying for the time of year at low and intermediate altitudes.

Tendency

Sunday: Slight decrease in danger of wet and gliding avalanches.

Danger Level 3 - Considerable

AM:

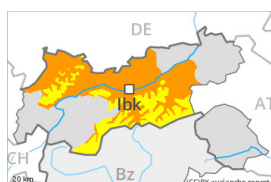


Tendency: Decreasing avalanche danger
 on Sunday 19 03 2023

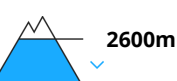


Snowpack stability: **poor**
 Frequency: **some**
 Avalanche size: **medium**

PM:



Tendency: Decreasing avalanche danger
 on Sunday 19 03 2023



Snowpack stability: **very poor**
 Frequency: **some**
 Avalanche size: **medium**



Snowpack stability: **poor**
 Frequency: **some**
 Avalanche size: **medium**

Significant increase in danger of wet avalanches in the course of the day.

Weak layers in the old snowpack can be released even now by individual winter sport participants. This applies in particular on very steep shady slopes above approximately 2200 m, as well as on very steep east facing slopes above approximately 2400 m. Caution is to be exercised at transitions from a shallow to a deep snowpack.

As a consequence of warming during the day and the solar radiation, the likelihood of wet avalanches during the day being released will increase significantly. This applies especially on steep southeast, south and west facing slopes below approximately 2600 m. In particular in steep rocky terrain more small to medium-sized loose snow avalanches are to be expected. In addition an increasing number of gliding avalanches are possible. Backcountry tours should be concluded timely.

Snowpack

Danger patterns

dp.10: springtime scenario

dp.1: deep persistent weak layer

The weather was very mild over a wide area. The wind slabs have bonded quite well together. Faceted weak layers exist in the old snowpack, especially on shady slopes above approximately 2200 m, as well as on east and west facing slopes above approximately 2400 m.

The surface of the snowpack has frozen to form a strong crust and will soften during the day. Sunshine and high temperatures will give rise as the day progresses to increasing softening of the snowpack. The spring-like weather conditions will give rise to a loss of strength within the snowpack in particular on steep west



facing slopes below approximately 2600 m.

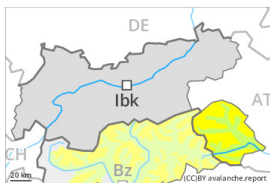
Only a small amount of snow is lying for the time of year at low and intermediate altitudes.

Tendency

Sunday: Slight decrease in danger of wet and gliding avalanches.

Danger Level 2 - Moderate

AM:



Tendency: Constant avalanche danger →
 on Sunday 19 03 2023

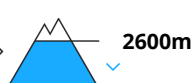


Snowpack stability: **poor**
 Frequency: **some**
 Avalanche size: **medium**

PM:



Tendency: Constant avalanche danger →
 on Sunday 19 03 2023



Snowpack stability: **very poor**
 Frequency: **few**
 Avalanche size: **medium**



Snowpack stability: **poor**
 Frequency: **some**
 Avalanche size: **medium**

Weakly bonded old snow is to be evaluated with care and prudence. Wet avalanches as the day progresses.

In some places avalanches can be triggered in the faceted old snow and reach medium size, especially on very steep shady slopes above approximately 2200 m, as well as on very steep east and west facing slopes above approximately 2400 m. Caution is to be exercised at transitions from a shallow to a deep snowpack. As the day progresses the likelihood of avalanches being released will increase a little.

In addition the somewhat older wind slabs at high altitudes and in high Alpine regions are capable of being triggered in isolated cases still. This applies especially on steep, little used shady slopes.

As a consequence of warming during the day and the solar radiation, the likelihood of wet avalanches being released will increase. This applies especially on steep southeast, south and west facing slopes below approximately 2600 m. Backcountry tours should be concluded timely.

Snowpack

Danger patterns

dp.1: deep persistent weak layer

dp.10: springtime scenario

Faceted weak layers exist in the old snowpack, especially on shady slopes above approximately 2200 m, as well as on east and west facing slopes above approximately 2400 m.

The wind slabs are in individual cases still prone to triggering at high altitudes and in high Alpine regions. Sunshine and high temperatures will give rise as the day progresses to increasing moistening of the



snowpack. These conditions will bring about a gradual weakening of the snowpack in particular on steep sunny slopes.

Tendency

Sunday: Slight decrease in danger of wet and gliding avalanches as the temperature drops.

Danger Level 1 - Low

AM:



Tendency: Constant avalanche danger →
on Sunday 19 03 2023

PM:



Tendency: Constant avalanche danger →
on Sunday 19 03 2023



Wet snow



Snowpack stability: **very poor**

Frequency: **few**

Avalanche size: **small**

Slight increase in danger of wet avalanches in the course of the day.

Late morning: The early morning will see favourable avalanche conditions over a wide area.

Midday and afternoon:

As a consequence of warming during the day and the solar radiation, the likelihood of wet avalanches during the day being released will increase a little. This applies especially on steep west facing slopes. The avalanches are rather small.

In particular in steep rocky terrain more loose snow avalanches are possible.

Snowpack

Danger patterns

dp.10: springtime scenario

The weather conditions facilitated a substantial strengthening of the weak layers. Outgoing longwave radiation during the night was good over a wide area.

Sunshine and high temperatures will give rise as the day progresses to gradual softening of the snowpack especially on sunny slopes. These conditions will bring about a gradual weakening of the snowpack from midday.

Only a small amount of snow is lying for the time of year at low and intermediate altitudes.

Tendency

Low avalanche danger will persist.