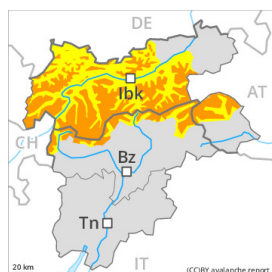


Danger Level 3 - Considerable



Tendency: Constant avalanche danger →
on Saturday 01 04 2023



Wind slab



2200m

Snowpack stability: **poor**

Frequency: **some**

Avalanche size: **large**



Wet snow



2200m

Snowpack stability: **poor**

Frequency: **some**

Avalanche size: **medium**

Wind slabs represent the main danger. Wet snow requires caution.

The wind slabs of the last few days can be released easily, even by a single winter sport participant. The avalanche prone locations are to be found in particular on steep west, north and east facing slopes above approximately 2200 m. Caution is to be exercised in gullies and bowls, and behind abrupt changes in the terrain. To some extent avalanches can also penetrate deep layers and reach large size.

As the penetration by moisture increases wet and gliding avalanches are possible, in the event of prolonged bright spells especially below approximately 2200 m as well as.

Snowpack

Danger patterns

dp.6: cold, loose snow and wind

dp.10: springtime scenario

As a consequence of the strong to storm force northwesterly wind, snow drift accumulations formed during the last few days. In some cases the various wind slabs have bonded poorly with each other and the old snowpack. This applies on west, north and east facing slopes above approximately 2200 m. Caution is to be exercised in particular on very steep northeast facing slopes as well as at elevated altitudes. On sunny slopes the snowpack is better bonded.

Faceted weak layers exist in the old snowpack, especially on shady slopes above approximately 2400 m.

Outgoing longwave radiation during the night will be reduced over a wide area. The spring-like weather conditions on Friday will give rise to increasing and thorough wetting of the snowpack below approximately 2200 m.

Tendency

The avalanche danger will persist.

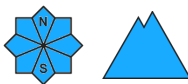
Danger Level 2 - Moderate



Tendency: Constant avalanche danger →
on Saturday 01 04 2023



Wet snow



Snowpack stability: **poor**

Frequency: **some**

Avalanche size: **medium**



Wind slab



Snowpack stability: **poor**

Frequency: **some**

Avalanche size: **medium**

Wet snow requires caution. Wind slabs are to be avoided.

As the penetration by moisture increases more frequent wet and gliding avalanches are possible.

The wind slabs of the last few days can be released by a single winter sport participant in some cases. The avalanche prone locations are to be found in particular on steep shady slopes above approximately 1800 m. Caution is to be exercised in gullies and bowls, and behind abrupt changes in the terrain.

Snowpack

Danger patterns

dp.10: springtime scenario

dp.6: cold, loose snow and wind

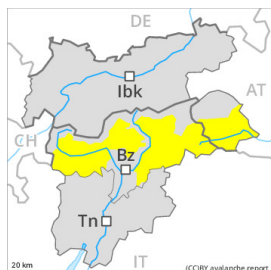
As a consequence of the strong to storm force northwesterly wind, snow drift accumulations formed during the last few days. In some cases the various wind slabs have bonded poorly together, in particular on shady slopes.

Outgoing longwave radiation during the night will be reduced over a wide area. The spring-like weather conditions on Thursday will give rise to gradual and thorough wetting of the snowpack.

Tendency

The avalanche danger will persist.

Danger Level 2 - Moderate



Tendency: Constant avalanche danger →
 on Saturday 01 04 2023



Wind slab



2200m

Snowpack stability: **poor**

Frequency: **some**

Avalanche size: **medium**



Wet snow



2200m

Snowpack stability: **very poor**

Frequency: **few**

Avalanche size: **medium**

Fresh wind slabs represent the main danger. Wet avalanches below approximately 2200 m.

As the day progresses as a consequence of new snow and wind there will be an increase in the danger of dry avalanches within the current danger level. The fresh wind slabs can be released even by a single winter sport participant. They are to be evaluated with care and prudence in particular on west to north to east facing aspects above approximately 2200 m. At elevated altitudes the likelihood of avalanches being released is greater. Dry avalanches can additionally in very isolated cases be released in the weakly bonded old snow also.

Avalanches can reach medium size.

As a consequence of the rain wet avalanches are possible, especially below approximately 2200 m.

Snowpack

Danger patterns

dp.6: cold, loose snow and wind

dp.3: rain

As a consequence of snowfall above approximately 1800 m and the moderate to strong wind, fresh snow drift accumulations will form on Friday. These are prone to triggering in particular on west to north to east facing aspects above approximately 2200 m. At elevated altitudes the snowpack is weaker.

Faceted weak layers exist in the old snowpack, especially on steep shady slopes above approximately 2400 m.

Outgoing longwave radiation during the night will be severely restricted over a wide area. The surface of the snowpack is not frozen and will already be soft in the early morning. The rain will give rise to a loss of strength within the snowpack.

Tendency

On Saturday the wind will be moderate to strong. The wind slabs remain prone to triggering on steep shady slopes.

On very steep slopes moist loose snow slides are to be expected.

Danger Level 2 - Moderate



Tendency: Constant avalanche danger →
 on Saturday 01 04 2023



Wind slab



Snowpack stability: **poor**

Frequency: **some**

Avalanche size: **medium**



Wet snow



Snowpack stability: **very poor**

Frequency: **few**

Avalanche size: **medium**

Fresh wind slabs represent the main danger. Wet avalanches below approximately 2200 m.

As the day progresses as a consequence of new snow and wind there will be an increase in the danger of dry avalanches within the current danger level. The fresh wind slabs can be released even by a single winter sport participant. They are to be evaluated with care and prudence above approximately 2200 m. At elevated altitudes the likelihood of avalanches being released is greater. Dry avalanches can additionally in very isolated cases be released in the weakly bonded old snow also.

Avalanches can reach medium size.

As a consequence of the rain wet avalanches are possible, especially below approximately 2200 m.

Snowpack

Danger patterns

dp.6: cold, loose snow and wind

dp.3: rain

As a consequence of snowfall above approximately 1800 m and the moderate to strong wind, fresh snow drift accumulations will form on Friday. These are prone to triggering in all aspects above approximately 2200 m. At elevated altitudes the snowpack is weaker.

Faceted weak layers exist in the old snowpack, especially on steep shady slopes above approximately 2400 m.

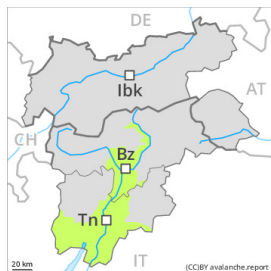
Outgoing longwave radiation during the night will be severely restricted over a wide area. The surface of the snowpack is not frozen and will already be soft in the early morning. The rain will give rise to a loss of strength within the snowpack.

Tendency

On Saturday the wind will be moderate to strong. The wind slabs remain prone to triggering on steep shady slopes.

On very steep slopes moist loose snow slides are to be expected.

Danger Level 1 - Low



Tendency: Constant avalanche danger →
on Saturday 01 04 2023

Low avalanche danger will prevail. Fresh wind slabs require caution.

The fresh wind slabs are very small and can only be released in isolated cases. Individual avalanche prone locations are to be found on extremely steep slopes and at elevated altitudes. These places are very rare and are clearly recognisable to the trained eye.

As a consequence of the rain wet avalanches are possible, especially below approximately 2200 m.

Snowpack

Danger patterns

dp.6: cold, loose snow and wind

As a consequence of snowfall above approximately 1800 m and the moderate to strong wind, fresh snow drift accumulations will form on Friday. These are mostly small and can only be released in isolated cases. The old snowpack is largely stable.

Outgoing longwave radiation during the night will be severely restricted over a wide area. The surface of the snowpack is not frozen and will already be soft in the early morning. The rain will give rise to a loss of strength within the snowpack.

From a snow sport perspective, in most cases insufficient snow is lying.

Tendency

The weather effects will foster a strengthening of the snow drift accumulations on Saturday, especially on sunny slopes.