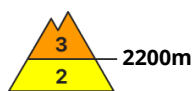
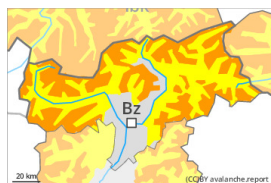


Danger Level 3 - Considerable



Tendency: Constant avalanche danger →
 on Friday 14 04 2023



Wind slab



Snowpack stability: **very poor**

Frequency: **some**

Avalanche size: **medium**



New snow



Snowpack stability: **poor**

Frequency: **some**

Avalanche size: **medium**

The new snow and wind slabs represent the main danger. Increase in avalanche danger as a consequence of the snowfall.

The fresh snow and the wind slabs that are being formed by the wind can be released easily, even by a single winter sport participant. The avalanche prone locations are to be found on steep slopes of all aspects above approximately 2200 m. Caution is to be exercised adjacent to ridgelines and in gullies and bowls. The avalanche prone locations are barely recognisable because of the poor visibility. At elevated altitudes the likelihood of avalanches being released is greater. As a consequence of new snow and wind the prevalence and size of the avalanche prone locations will increase as the day progresses. Avalanches can reach quite a large size.

In addition in particular on northwest, north and east facing slopes, individual natural avalanches are possible, especially above approximately 2600 m on the Main Alpine Ridge.

On extremely steep slopes loose snow avalanches are to be expected, even medium-sized ones. In the event of prolonged bright spells this applies in particular. In addition in the regions exposed to heavier precipitation, small and, in isolated cases, medium-sized gliding avalanches are possible, especially on steep grassy slopes at intermediate and high altitudes.

Experience and restraint are required.

Snowpack

Danger patterns

dp.6: cold, loose snow and wind

dp.4: cold following warm / warm following cold

Over a wide area 20 to 40 cm of snow, and even more in some localities, will fall on Thursday above approximately 1000 m. As a consequence of a gathering strong wind from variable directions, avalanche prone wind slabs will form. The various wind slabs have bonded poorly together. In some cases new snow and wind slabs are lying on the soft surface of an old snowpack, in particular on shady slopes at elevated altitudes.

The snowpack will become increasingly prone to triggering.

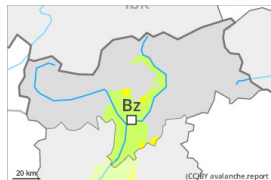
Isolated avalanche prone weak layers exist in the old snowpack on very steep northwest, north and east facing slopes, especially above approximately 2600 m on the Main Alpine Ridge.



Tendency

The wind will be strong over a wide area. The new snow and wind slabs remain prone to triggering.

Danger Level 2 - Moderate



Tendency: Constant avalanche danger →
on Friday 14 04 2023



Wind slab



Snowpack stability: **poor**

Frequency: **some**

Avalanche size: **medium**

Fresh wind slabs require caution.

The fresh wind slabs can be released by a single winter sport participant in some cases. The avalanche prone locations are to be found in particular on steep west to north to east facing slopes above approximately 2000 m. Caution is to be exercised adjacent to ridgelines and in gullies and bowls. At elevated altitudes the likelihood of avalanches being released is greater. As a consequence of new snow and wind the prevalence and size of the avalanche prone locations will increase as the day progresses. Avalanches can reach medium size in isolated cases.

On extremely steep slopes loose snow avalanches are possible.

Snowpack

Danger patterns

dp.6: cold, loose snow and wind

Over a wide area 10 to 20 cm of snow, and even more in some localities, will fall on Thursday. In some places wind slabs are lying on soft layers, in particular on steep shady slopes at elevated altitudes. As a consequence of a gathering strong wind from variable directions, further wind slabs will form.

Tendency

The wind will be strong. Wind slabs remain prone to triggering in particular on shady slopes.