

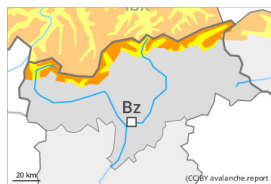
Danger Level 3 - Considerable



Treeline

Tendency: Constant avalanche danger →

on Monday 17 04 2023



New snow



Treeline

Snowpack stability: **very poor**

Frequency: **some**

Avalanche size: **large**



Persistent weak layer

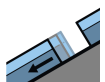


2400m

Snowpack stability: **poor**

Frequency: **few**

Avalanche size: **large**



Gliding snow



2400m

Snowpack stability: **very poor**

Frequency: **few**

Avalanche size: **medium**

New snow represents the main danger. Weakly bonded old snow at elevated altitudes.

The large quantity of fresh snow of the last few days and the sometimes large wind slabs can be released easily, even by a single winter sport participant,. The avalanche prone locations are to be found in steep terrain above the tree line. Caution is to be exercised in gullies and bowls, and behind abrupt changes in the terrain. The avalanche prone locations are sometimes covered with new snow and are difficult to recognise. The number and size of avalanche prone locations will increase with altitude.

In isolated cases avalanches can also release deeper layers of the snowpack and reach large size, especially on very steep west, north and east facing slopes above approximately 2400 m.

On extremely steep slopes more loose snow avalanches are to be expected, even medium-sized ones, in the event of prolonged bright spells in particular. In addition in particular in the regions exposed to heavier precipitation, gliding avalanches are possible, especially on steep grassy slopes at intermediate and high altitudes.

Caution and restraint are required.

Snowpack

Danger patterns

dp.6: cold, loose snow and wind

dp.4: cold following warm / warm following cold

5 to 15 cm of snow, and even more in some localities, will fall until late in the night. On Sunday the wind will be strong in some cases in particular on the Main Alpine Ridge and to the south.

The snowpack will be prone to triggering. In some places new snow and wind slabs are lying on soft layers.

The various wind slabs have bonded poorly together, in particular at elevated altitudes.

Faceted weak layers exist in the old snowpack on very steep west, north and east facing slopes, especially above approximately 2400 m on the Main Alpine Ridge. Whumpfung sounds and the formation of shooting

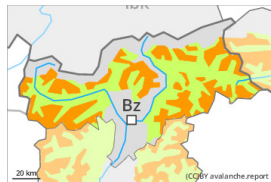


cracks when stepping on the snowpack indicate the unfavourable bonding of the snowpack in the regions exposed to substantial precipitation.

Tendency

Monday: As the snowfall eases there will be a decrease in the danger of dry avalanches within the current danger level. The weather conditions will bring about a gradual strengthening of the snowpack.

Danger Level 3 - Considerable



Tendency: Decreasing avalanche danger
on Monday 17 04 2023



Wind slab



Snowpack stability: **very poor**

Frequency: **some**

Avalanche size: **medium**

Wind slabs represent the main danger.

The fresh wind slabs can be released easily in some places on very steep west, north and east facing slopes above approximately 2200 m. In high Alpine regions the avalanche prone locations are a little more prevalent and exist in all aspects. Avalanche prone locations are to be found in gullies and bowls, and behind abrupt changes in the terrain. Fresh wind slabs are to be bypassed as far as possible. Mostly avalanches are medium-sized.

As a consequence of solar radiation more small and, in isolated cases, medium-sized loose snow avalanches are possible, especially on extremely steep sunny slopes. In addition in particular in the regions exposed to heavier precipitation, individual gliding avalanches are possible.

Snowpack

Danger patterns

dp.6: cold, loose snow and wind

dp.2: gliding snow

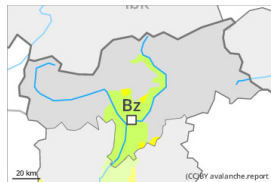
On Sunday the wind will be strong in some cases in the regions exposed to the foehn wind. The wind will transport the new snow. The snowpack will be prone to triggering in some places. The various wind slabs have bonded poorly together, in particular on shady slopes at elevated altitudes.

Isolated avalanche prone weak layers exist in the old snowpack on very steep shady slopes, especially at elevated altitudes.

Tendency

Monday: The weather conditions will bring about a gradual strengthening of the snow drift accumulations.

Danger Level 2 - Moderate



Tendency: Decreasing avalanche danger
on Monday 17 04 2023



Wind slab



Snowpack stability: **poor**

Frequency: **some**

Avalanche size: **medium**

Fresh wind slabs require caution.

The fresh wind slabs can still be released in some cases. The avalanche prone locations are to be found in particular on very steep shady slopes above approximately 2200 m. Caution is to be exercised adjacent to ridgelines and in gullies and bowls. Avalanches can reach medium size in isolated cases.

On extremely steep slopes individual wet loose snow slides are possible, in the event of solar radiation in particular.

Snowpack

Danger patterns

dp.6: cold, loose snow and wind

In some places wind slabs are lying on soft layers, in particular on steep shady slopes at elevated altitudes. In some cases the various wind slabs have bonded still only poorly together. Sunshine and high temperatures will give rise as the day progresses to gradual moistening of the snowpack.

Tendency

Monday: The weather conditions fostered a strengthening of the snow drift accumulations. They are now only very rarely prone to triggering.