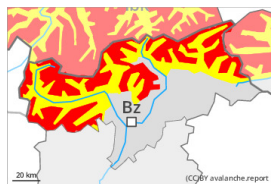


Danger Level 4 - High



Tendency: Constant avalanche danger →
 on Sunday 03 12 2023



Persistent weak layer



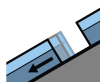
Snowpack stability: **very poor**
 Frequency: **many**
 Avalanche size: **large**



New snow



Snowpack stability: **very poor**
 Frequency: **some**
 Avalanche size: **medium**



Gliding snow



Snowpack stability: **very poor**
 Frequency: **few**
 Avalanche size: **medium**

Natural avalanches are to be expected. The snow sport conditions outside marked and open pistes are critical.

As a consequence of the heavy snowfall more frequent natural avalanches are to be expected. Avalanches can be triggered in the old snowpack and reach quite a large size. This applies on steep slopes above approximately 2000 m.

The snow sport conditions outside marked and open pistes are critical. Winter sport participants can release avalanches very easily, including large ones. Remotely triggered avalanches are possible. The avalanche prone locations are currently prevalent immediately adjacent to the pistes as well. Natural avalanches and whumpfung sounds and the formation of shooting cracks when stepping on the snowpack serve as an alarm indicating the danger. Extensive experience in the assessment of avalanche danger and great restraint are required.

In addition a certain danger of gliding avalanches exists. In the regions exposed to a lot of new snow this applies in particular on steep grassy slopes.

Snowpack

Danger patterns

dp.4: cold following warm / warm following cold

dp.2: gliding snow

Over a wide area 30 to 50 cm of snow will fall. In the central and eastern parts of the main Alpine ridge and in the Ortler Range up to 80 cm of snow will fall.

The sometimes strong wind will transport the new snow.

Large quantities of fresh snow and the wind-drifted snow are lying on top of a weakly bonded old snowpack. This applies above approximately 2000 m. Field observations confirm the existence of a weak

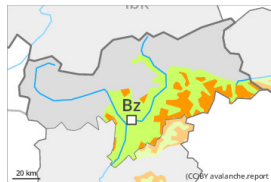


snowack.

Tendency

Outside marked and open pistes a critical avalanche situation will be encountered over a wide area.
Restraint is advisable on this first sunny day after a long period of poor weather.

Danger Level 3 - Considerable



Tendency: Constant avalanche danger →
on Sunday 03 12 2023



New snow



Treeline

Snowpack stability: **very poor**

Frequency: **some**

Avalanche size: **medium**

At elevated altitudes a sometimes precarious avalanche situation will prevail.

Very large quantity of fresh snow as well as the sometimes large wind slabs formed during the snowfall can be released easily, or, in isolated cases naturally in all aspects above the tree line. Avalanche prone locations are to be found in gullies and bowls, and behind abrupt changes in the terrain. They are currently prevalent immediately adjacent to the pistes as well. The fresh wind slabs are covered with new snow in some cases and therefore difficult to recognise. Avalanches can be triggered in the new snow and wind slab layers and reach quite a large size. In addition some small to medium-sized loose snow avalanches are to be expected.

A certain danger of gliding avalanches exists, in particular on steep grassy slopes.

Backcountry touring and other off-piste activities call for extensive experience in the assessment of avalanche danger and restraint.

Snowpack

Danger patterns

dp.6: cold, loose snow and wind

High altitudes and the high Alpine regions: Over a wide area 30 to 50 cm of snow, and even more in some localities, will fall until the early morning. As a consequence of a sometimes strong wind from variable directions, brittle wind slabs will form in all aspects. The old snowpack is largely stable and its surface has a crust, in particular on steep sunny slopes. Snow depths vary greatly above the tree line, depending on the influence of the wind.

Intermediate altitudes: The old snowpack is wet.

Tendency

A critical avalanche situation will prevail. Restraint is advisable on this first sunny day.