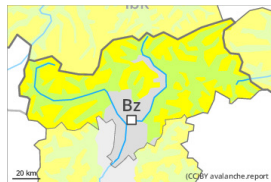


## Danger Level 2 - Moderate



**Tendency: Constant avalanche danger** →  
on Friday 12 01 2024



Wind slab



Treeline

Snowpack stability: **poor**

Frequency: **some**

Avalanche size: **medium**

### Fresh wind slabs represent the main danger.

The fresh and somewhat older wind slabs can be released by a single winter sport participant above the tree line. Caution is to be exercised in particular on steep shady slopes, as well as in gullies and bowls, and behind abrupt changes in the terrain. The number and size of avalanche prone locations will increase with altitude. In high Alpine regions these avalanche prone locations are present in all aspects.

Individual dry loose snow avalanches are possible. This applies in particular on extremely steep sunny slopes.

In addition a latent danger of gliding avalanches exists, in particular on steep east, south and west facing slopes below approximately 2600 m. In isolated cases the gliding avalanches are quite large.

### Snowpack

#### Danger patterns

dp.6: cold, loose snow and wind

dp.2: gliding snow

As a consequence of a moderate to strong northeasterly wind, wind slabs will form in the afternoon. The fresh and older wind slabs are lying on soft layers.

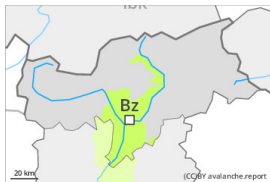
The wind slabs are lying on surface hoar in some places. The new snow of last week is lying on a crust in all aspects below approximately 2600 m. Towards its base, the snowpack is largely stable.

Snow depths vary greatly above the tree line, depending on the influence of the wind. The snowpack will be subject to considerable local variations.

### Tendency

The fresh and older wind slabs remain in some cases prone to triggering.

## Danger Level 1 - Low



**Tendency: Constant avalanche danger** →  
on Friday 12 01 2024



Wind slab



Treeline

Snowpack stability: **poor**

Frequency: **few**

Avalanche size: **small**

### Wind slabs require caution.

The fresh and somewhat older wind slabs can be released in isolated cases, especially at their margins. Caution is to be exercised in particular adjacent to ridgelines in gullies and bowls, and behind abrupt changes in the terrain. Mostly avalanches are small.

### Snowpack

#### Danger patterns

dp.6: cold, loose snow and wind

The fresh and somewhat older wind slabs are lying on soft layers. The old snowpack will be quite stable.

### Tendency

Wind slabs require caution.