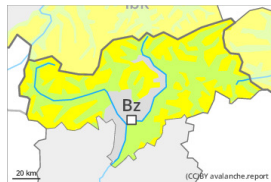




Danger Level 2 - Moderate



Tendency: Constant avalanche danger →
on Friday 19 01 2024



Wind slab



Treeline

Snowpack stability: **poor**

Frequency: **some**

Avalanche size: **medium**

Fresh wind slabs are mostly easy to recognise and prone to triggering.

The fresh wind slabs will be deposited on the unfavourable surface of an old snowpack. These can be released easily in some cases above the tree line. This also applies in areas close to the tree line. The avalanche prone locations are to be found in particular adjacent to ridgelines and in gullies and bowls in all aspects. The wind slabs are clearly recognisable to the trained eye. They are to be avoided as far as possible. In isolated cases avalanches are medium-sized. Even a small avalanche can sweep winter sport participants along and give rise to falls.

In addition further very occasional gliding avalanches are possible, in particular on steep east, south and west facing slopes below approximately 2600 m. In isolated cases the gliding avalanches are quite large, in particular in the regions with a lot of snow. Areas with glide cracks are to be avoided.

Snowpack

Danger patterns

dp.6: cold, loose snow and wind

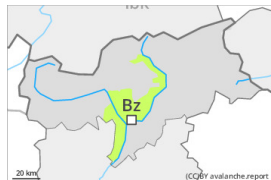
Over a wide area up to 5 cm of snow, and even more in some localities, will fall above approximately 1200 m. In the north up to 10 cm of snow will fall above approximately 1200 m. As a consequence of a moderate to strong wind from westerly directions, further wind slabs will form from late morning. The fresh wind slabs are lying on the unfavourable surface of an old snowpack.

Towards its base, the snowpack is largely stable. Snow depths vary greatly above the tree line, depending on the influence of the wind. The snowpack will be subject to considerable local variations.

Tendency

Some snow will fall in some localities. The fresh wind slabs remain prone to triggering.

Danger Level 1 - Low



Tendency: Constant avalanche danger →
on Friday 19 01 2024



Wind slab



Treeline

Snowpack stability: **poor**

Frequency: **few**

Avalanche size: **small**

Wind slabs require caution.

The wind slabs can be released in isolated cases, especially at their margins. Caution is to be exercised in particular adjacent to ridgelines in gullies and bowls, and behind abrupt changes in the terrain. Mostly avalanches are small.

Snowpack

Danger patterns

dp.6: cold, loose snow and wind

The wind slabs are lying on soft layers. The old snowpack will be quite stable.

Tendency

The fresh wind slabs remain prone to triggering.