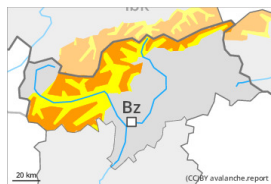




Danger Level 3 - Considerable



Treeline

Tendency: Decreasing avalanche danger
on Thursday 29 02 2024

Wind slab



Treeline

Snowpack stability: **poor**Frequency: **many**Avalanche size: **medium**

Gliding snow



2600m

Snowpack stability: **very poor**Frequency: **some**Avalanche size: **medium**Persistent
weak layer

2400m

Snowpack stability: **poor**Frequency: **few**Avalanche size: **large**

Fresh wind slabs represent the main danger. Gliding snow requires caution.

The new snow and wind slabs can be released easily, even by a single winter sport participant, above the tree line. Very isolated natural avalanches are possible, especially in the Ultental and in the Ortler Range. The number and size of avalanche prone locations will increase with altitude.

Weak layers in the old snowpack can still be released in isolated cases by individual winter sport participants. The avalanche prone locations are to be found in particular on west, north and east facing slopes above approximately 2400 m. Avalanches can reach large size in isolated cases.

As a consequence of warming during the day and solar radiation small to medium-sized loose snow avalanches are to be expected. In particular in the regions with a lot of snow more frequent medium-sized gliding avalanches are possible, especially below approximately 2600 m.

Snowpack

Danger patterns

dp.6: cold, loose snow and wind

dp.2: gliding snow

Over a wide area 15 to 30 cm of snow, and even more in some localities, fell on Tuesday. As a consequence of new snow and wind the wind slabs have increased in size appreciably, in particular at high altitudes and in high Alpine regions. They are prone to triggering.

Isolated avalanche prone weak layers exist deeper in the snowpack in particular on steep east, north and west facing slopes.

Tendency

The conditions will facilitate a gradual stabilisation of the snow drift accumulations. The weather conditions



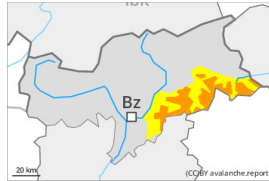
will give rise to increasing moistening of the snowpack also at elevated altitudes. Gliding avalanches and moist snow slides are to be expected.



Danger Level 3 - Considerable



Tendency: Decreasing avalanche danger
on Thursday 29 02 2024



Wind slab



Treeline

Snowpack stability: **poor**

Frequency: **many**

Avalanche size: **medium**



Persistent weak layer

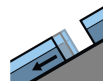


2400m

Snowpack stability: **poor**

Frequency: **few**

Avalanche size: **large**



Gliding snow



2600m

Snowpack stability: **very poor**

Frequency: **some**

Avalanche size: **medium**

Fresh wind slabs represent the main danger. Weakly bonded old snow requires caution.

The new snow and wind slabs can be released easily, even by a single winter sport participant, above the tree line. The number and size of avalanche prone locations will increase with altitude.

Weak layers in the old snowpack can be released in isolated cases even by individual winter sport participants. The avalanche prone locations are to be found in particular on west, north and east facing slopes above approximately 2400 m. Avalanches can reach large size in isolated cases.

As a consequence of warming during the day and solar radiation small to medium-sized loose snow avalanches are to be expected. In particular in the regions with a lot of snow more frequent small and medium-sized gliding avalanches are possible, especially below approximately 2600 m.

Snowpack

Danger patterns

dp.6: cold, loose snow and wind

dp.4: cold following warm / warm following cold

Over a wide area 10 to 15 cm of snow, and even more in some localities, fell on Tuesday. As a consequence of new snow and wind the wind slabs have increased in size appreciably. They are prone to triggering.

Avalanche prone weak layers exist deeper in the snowpack in particular on steep east, north and west facing slopes.

Tendency

The conditions will facilitate a gradual stabilisation of the snow drift accumulations. The high humidity will give rise to increasing moistening of the snowpack also at elevated altitudes. Gliding avalanches and moist



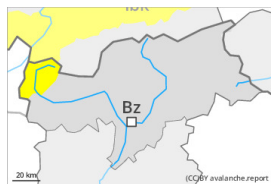
snow slides are to be expected.



Danger Level 2 - Moderate



Tendency: Constant avalanche danger →
on Thursday 29 02 2024



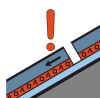
Wind slab



Snowpack stability: **poor**

Frequency: **some**

Avalanche size: **medium**



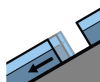
Persistent weak layer



Snowpack stability: **poor**

Frequency: **few**

Avalanche size: **large**



Gliding snow



Snowpack stability: **very poor**

Frequency: **some**

Avalanche size: **medium**

Fresh wind slabs require caution. Weakly bonded old snow is to be evaluated with care and prudence.

As a consequence of new snow and a sometimes strong southerly wind, sometimes avalanche prone wind slabs formed in particular adjacent to ridgelines. This applies especially on steep shady slopes above approximately 2200 m. Single winter sport participants can release avalanches, including medium-sized ones. The number and size of avalanche prone locations will increase with altitude.

Avalanches can in isolated cases be triggered in the old snowpack and reach large size in isolated cases in particular on very steep west, north and east facing slopes. Such avalanche prone locations are to be found above approximately 2400 m.

As a consequence of warming during the day individual loose snow slides are to be expected as the day progresses, but they will be mostly small. On steep grassy slopes medium-sized gliding avalanches are possible, especially on sunny slopes below approximately 2600 m.

Snowpack

Danger patterns

dp.6: cold, loose snow and wind

dp.4: cold following warm / warm following cold

In some regions 5 to 15 cm of snow fell on Tuesday. The southerly wind has transported the new snow. Fresh wind slabs are lying on soft layers especially on shady slopes.

In isolated cases new snow and wind slabs are lying on a weakly bonded old snowpack, in particular on steep west, north and east facing slopes above approximately 2400 m.



Tendency

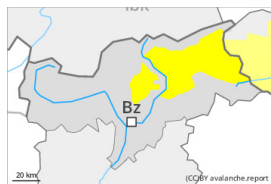
The conditions will facilitate a gradual stabilisation of the snow drift accumulations. The weather conditions will give rise to increasing moistening of the snowpack also at elevated altitudes. Gliding avalanches and moist snow slides are to be expected.



Danger Level 2 - Moderate



Tendency: Constant avalanche danger →
on Thursday 29 02 2024



Wind slab

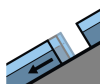


2200m

Snowpack stability: **poor**

Frequency: **some**

Avalanche size: **medium**



Gliding snow

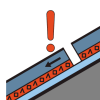


2600m

Snowpack stability: **very poor**

Frequency: **some**

Avalanche size: **medium**



Persistent
weak layer



2400m

Snowpack stability: **poor**

Frequency: **few**

Avalanche size: **large**

Fresh wind slabs represent the main danger. Gliding snow requires caution.

The new snow and wind slabs can be released by a single winter sport participant in particular on shady slopes above the tree line. The number and size of avalanche prone locations will increase with altitude. Weak layers in the old snowpack can be released in some places even by individual winter sport participants. The avalanche prone locations are to be found in particular on west, north and east facing slopes above approximately 2400 m. Avalanches can reach large size in isolated cases.

As a consequence of warming during the day and solar radiation mostly small loose snow avalanches are to be expected. In particular in the regions with a lot of snow more frequent small and medium-sized gliding avalanches are possible, especially below approximately 2600 m.

Snowpack

Danger patterns

dp.6: cold, loose snow and wind

dp.2: gliding snow

Over a wide area 5 to 15 cm of snow fell on Tuesday. As a consequence of new snow and wind the wind slabs have increased in size moderately. They are in some cases prone to triggering.

Isolated avalanche prone weak layers exist deeper in the snowpack in particular on steep east, north and west facing slopes.

Tendency

The conditions will facilitate a gradual stabilisation of the snow drift accumulations. The weather conditions will give rise to increasing moistening of the snowpack also at elevated altitudes. Gliding avalanches and moist snow slides are to be expected.



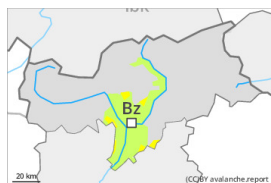
Danger Level 2 - Moderate



Treeline

Tendency: Constant avalanche danger →

on Thursday 29 02 2024



Wind slab



Treeline

Snowpack stability: **poor**Frequency: **few**Avalanche size: **medium**

Gliding snow

Snowpack stability: **very poor**Frequency: **few**Avalanche size: **small**

Fresh wind slabs require caution. In addition individual gliding avalanches and moist snow slides are possible.

The fresh wind slabs can be released by a single winter sport participant in some cases in particular on steep shady slopes above the tree line, caution is to be exercised in particular adjacent to ridgelines and in pass areas. Mostly avalanches are only small.

On steep grassy slopes mostly small gliding avalanches and moist snow slides are possible as a consequence of the new snow.

Snowpack

Danger patterns

dp.6: cold, loose snow and wind

Up to 10 cm of snow, and even more in some localities, fell on Tuesday. As a consequence of the strong wind the wind slabs have increased in size moderately. They are in isolated cases prone to triggering.

In particular in the south only a little snow is lying.

Tendency

The conditions will facilitate a stabilisation of the snow drift accumulations. The high humidity will give rise to increasing moistening of the snowpack also at elevated altitudes. Moist snow slides are to be expected.