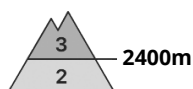
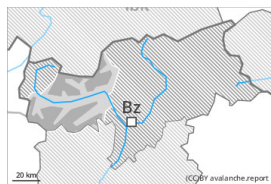




Danger Level 3 - Considerable



Tendency: Constant avalanche danger →
 on Saturday 02 03 2024



Wind slab



Snowpack stability: **poor**

Frequency: **many**

Avalanche size: **medium**



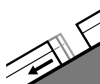
Persistent weak layer



Snowpack stability: **poor**

Frequency: **few**

Avalanche size: **large**



Gliding snow



Snowpack stability: **very poor**

Frequency: **some**

Avalanche size: **medium**

Fresh wind slabs represent the main danger. Gliding snow requires caution.

The wind slabs can be released even by a single winter sport participant in particular on steep shady slopes above approximately 2400 m. The number and size of avalanche prone locations will increase with altitude. Weak layers in the old snowpack can still be released in very isolated cases by individual winter sport participants. The avalanche prone locations are to be found in particular on west, north and east facing slopes above approximately 2400 m. Avalanches can in isolated cases penetrate deep layers and reach large size.

More frequent medium-sized moist loose snow avalanches are to be expected below approximately 2600 m. In particular in the regions with a lot of snow more frequent medium-sized gliding avalanches are to be expected, especially below approximately 2600 m.

Snowpack

Danger patterns

dp.6: cold, loose snow and wind

dp.2: gliding snow

Over a wide area up to 15 cm of snow, and even more in some localities, will fall. As a consequence of new snow and wind the wind slabs will increase in size moderately. They are in some cases prone to triggering, in particular at high altitudes and in high Alpine regions.

Isolated avalanche prone weak layers exist deeper in the snowpack in particular on steep east, north and west facing slopes.

The snowpack will be moist below approximately 2400 m.

Tendency



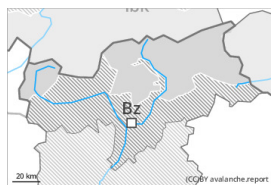
The weather conditions will facilitate a gradual stabilisation of the snowpack.



Danger Level 2 - Moderate



Tendency: Constant avalanche danger →
 on Saturday 02 03 2024



Wind slab

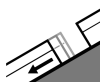


2400m

Snowpack stability: **poor**

Frequency: **some**

Avalanche size: **medium**



Gliding snow



2600m

Snowpack stability: **very poor**

Frequency: **some**

Avalanche size: **medium**

Fresh wind slabs require caution. Gliding snow requires caution.

The wind slabs of the last few days can be released by a single winter sport participant in some cases in particular on very steep shady slopes above approximately 2400 m. This applies especially adjacent to ridgelines. In some cases avalanches are medium-sized. The number and size of avalanche prone locations will increase with altitude. Avalanches can in very isolated cases be triggered in the old snowpack and reach large size in isolated cases in particular on very steep west, north and east facing slopes. Such avalanche prone locations are to be found above approximately 2400 m.

As a consequence of the rain more frequent wet loose snow avalanches are to be expected, but they will be mostly small. On steep grassy slopes medium-sized gliding avalanches are to be expected, especially below approximately 2600 m.

Snowpack

Danger patterns

dp.6: cold, loose snow and wind

dp.2: gliding snow

In some regions up to 10 cm of snow will fall on Friday. Fresh and somewhat older wind slabs are lying on soft layers in particular on shady slopes.

In isolated cases new snow and wind slabs are lying on a weakly bonded old snowpack, in particular on steep west, north and east facing slopes above approximately 2400 m.

The snowpack will be moist below approximately 2400 m. The surface of the snowpack cooled hardly at all during the overcast night and will soften quickly.

Tendency

Gliding avalanches and moist snow slides are still possible.



Danger Level 2 - Moderate



Tendency: Constant avalanche danger →
 on Saturday 02 03 2024



Wind slab

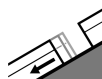


2400m

Snowpack stability: **poor**

Frequency: **some**

Avalanche size: **medium**



Gliding snow



2600m

Snowpack stability: **very poor**

Frequency: **some**

Avalanche size: **medium**



Persistent weak layer



Snowpack stability: **poor**

Frequency: **few**

Avalanche size: **large**

Fresh wind slabs require caution. Gliding snow requires caution.

The wind slabs of the last few days can be released by a single winter sport participant in some cases in particular on very steep shady slopes above approximately 2400 m. This applies especially adjacent to ridgelines. In some cases avalanches are medium-sized. The number and size of avalanche prone locations will increase with altitude. Avalanches can in very isolated cases be triggered in the old snowpack and reach large size in isolated cases in particular on very steep west, north and east facing slopes. Such avalanche prone locations are to be found above approximately 2400 m.

As a consequence of the rain more frequent wet loose snow avalanches are to be expected, but they will be mostly small. On steep grassy slopes medium-sized gliding avalanches are to be expected, especially below approximately 2600 m.

Snowpack

Danger patterns

dp.6: cold, loose snow and wind

dp.2: gliding snow

In some regions up to 10 cm of snow will fall on Friday. Fresh and somewhat older wind slabs are lying on soft layers in particular on shady slopes.

In isolated cases new snow and wind slabs are lying on a weakly bonded old snowpack, in particular on steep west, north and east facing slopes above approximately 2400 m.

The snowpack will be moist below approximately 2400 m. The surface of the snowpack cooled hardly at all during the overcast night and will soften quickly.



Tendency

Gliding avalanches and moist snow slides are still possible.



Danger Level 1 - Low



Tendency: Constant avalanche danger →
on Saturday 02 03 2024

Wind slabs require caution. In addition individual gliding avalanches and moist snow slides are possible.

Wind slabs can be released by a single winter sport participant in isolated cases in particular on steep shady slopes at high altitude. Mostly avalanches are only small.

On steep grassy slopes mostly small gliding avalanches and moist snow slides are possible.

Snowpack

Danger patterns

dp.6: cold, loose snow and wind

Some snow will fall in particular in the north. The wind slabs are in isolated cases prone to triggering.

The snowpack will be moist below approximately 2400 m. At low altitude hardly any snow is lying.

Tendency

The weather conditions will facilitate a stabilisation of the snowpack.