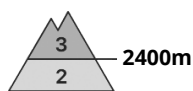


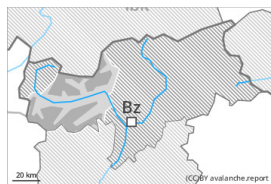




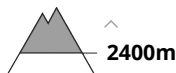
## Danger Level 3 - Considerable



**Tendency: Constant avalanche danger** →  
 on Sunday 03 03 2024



Wind slab



Snowpack stability: **poor**

Frequency: **many**

Avalanche size: **medium**



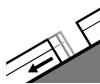
Persistent weak layer



Snowpack stability: **poor**

Frequency: **few**

Avalanche size: **large**



Gliding snow



Snowpack stability: **very poor**

Frequency: **some**

Avalanche size: **medium**

Fresh wind slabs represent the main danger. Gliding snow requires caution.

The wind slabs can be released even by a single winter sport participant in particular on steep shady slopes above approximately 2400 m. The number and size of avalanche prone locations will increase with altitude. Weak layers in the old snowpack can still be released in very isolated cases by individual winter sport participants. The avalanche prone locations are to be found in particular on west, north and east facing slopes above approximately 2400 m. Avalanches can in isolated cases penetrate deep layers and reach large size.

More frequent wet loose snow avalanches are to be expected, even medium-sized ones. In addition an appreciable danger of gliding avalanches exists, especially on grassy slopes below approximately 2600 m.

### Snowpack

**Danger patterns**

dp.6: cold, loose snow and wind

dp.2: gliding snow

Over a wide area up to 15 cm of snow, and even more in some localities, fell on Friday. In some regions up to 10 cm of snow, and even more in some localities, will fall above approximately 1500 m. The snowpack will be moist below approximately 2400 m. The surface of the snowpack will soften during the day.

As a consequence of new snow and wind the wind slabs will increase in size. They are in some cases prone to triggering, in particular at high altitudes and in high Alpine regions.

Isolated avalanche prone weak layers exist deeper in the snowpack in particular on steep east, north and west facing slopes.

### Tendency



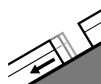
Over a wide area 10 to 20 cm of snow, and even more in some localities, will fall until Monday. As a consequence of new snow and strong wind the wind slabs will increase in size.  
Gliding avalanches and moist snow slides require caution.



## Danger Level 2 - Moderate



**Tendency: Constant avalanche danger** →  
 on Sunday 03 03 2024



Gliding snow



2600m

Snowpack stability: **very poor**

Frequency: **some**

Avalanche size: **medium**



Wind slab



2400m

Snowpack stability: **poor**

Frequency: **some**

Avalanche size: **medium**



Persistent weak layer



2400m

Snowpack stability: **poor**

Frequency: **few**

Avalanche size: **large**

Increase in danger of wet and gliding avalanches as a consequence of warming during the day. Fresh wind slabs require caution.

More frequent wet loose snow avalanches are to be expected, even medium-sized ones. In addition an appreciable danger of gliding avalanches exists, especially on grassy slopes below approximately 2600 m.

The wind slabs of the last few days can be released by a single winter sport participant in some cases in particular on very steep shady slopes above approximately 2400 m. This applies especially adjacent to ridgelines. In some cases avalanches are medium-sized. The number and size of avalanche prone locations will increase with altitude. Avalanches can in very isolated cases be triggered in the old snowpack and reach large size in isolated cases in particular on very steep west, north and east facing slopes. Such avalanche prone locations are to be found above approximately 2400 m.

### Snowpack

**Danger patterns**

dp.6: cold, loose snow and wind

dp.2: gliding snow

Some snow fell on Friday.

The snowpack will be moist below approximately 2400 m. The surface of the snowpack will soften during the day.

Fresh and somewhat older wind slabs are lying on soft layers in particular on shady slopes. This applies at high altitudes and in high Alpine regions. In isolated cases new snow and wind slabs are lying on a weakly bonded old snowpack, in particular on steep west, north and east facing slopes above approximately 2400 m.



## Tendency

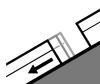
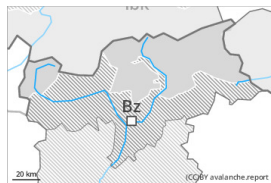
Gliding avalanches and moist snow slides require caution.

Some snow will fall until Monday. In isolated cases the wind slabs will increase in size.

## Danger Level 2 - Moderate



**Tendency: Constant avalanche danger** →  
 on Sunday 03 03 2024



Gliding snow



2600m

Snowpack stability: **very poor**

Frequency: **some**

Avalanche size: **medium**



Wind slab



2400m

Snowpack stability: **poor**

Frequency: **some**

Avalanche size: **medium**

Increase in danger of wet and gliding avalanches. Fresh wind slabs at high altitude.

More frequent wet loose snow avalanches are to be expected, even medium-sized ones. In addition an appreciable danger of gliding avalanches exists, in particular on steep sunny slopes below approximately 2600 m, as well as on steep shady slopes below approximately 2400 m.

The wind slabs of the last few days can be released by a single winter sport participant in some cases in particular on very steep shady slopes above approximately 2400 m. This applies especially adjacent to ridgelines. In some cases avalanches are medium-sized. The number and size of avalanche prone locations will increase with altitude.

Avalanches can in very isolated cases be triggered in the old snowpack and reach large size in isolated cases in particular on very steep west, north and east facing slopes. Such avalanche prone locations are to be found above approximately 2400 m.

### Snowpack

**Danger patterns**

dp.2: gliding snow

dp.6: cold, loose snow and wind

In some regions up to 10 cm of snow fell on Friday. Some snow will fall on Saturday in some regions. The snowpack will be moist below approximately 2400 m. The surface of the snowpack will soften during the day.

Fresh and somewhat older wind slabs are lying on soft layers in particular on shady slopes. This applies at high altitudes and in high Alpine regions. In isolated cases new snow and wind slabs are lying on a weakly bonded old snowpack, in particular on steep west, north and east facing slopes above approximately 2400 m.

### Tendency



Gliding avalanches and moist snow slides require caution.

Over a wide area up to 10 cm of snow, and even more in some localities, will fall until Monday. In isolated cases the wind slabs will increase in size.



## Danger Level 1 - Low



**Tendency: Constant avalanche danger** →  
on Sunday 03 03 2024

Wind slabs require caution. In addition individual gliding avalanches and moist snow slides are possible.

Wind slabs can be released by a single winter sport participant in isolated cases in particular on steep shady slopes at high altitude. Mostly avalanches are only small.

On steep grassy slopes mostly small gliding avalanches and moist snow slides are possible.

## Snowpack

### Danger patterns

dp.6: cold, loose snow and wind

Some snow will fall in particular in the north. The wind slabs are in isolated cases prone to triggering.

The snowpack will be moist below approximately 2400 m. At low altitude hardly any snow is lying.

## Tendency

The weather conditions will facilitate a stabilisation of the snowpack.