

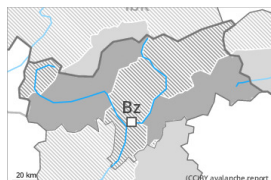




## Danger Level 3 - Considerable



**Tendency: Constant avalanche danger** →  
 on Tuesday 12 03 2024



Wind slab



Treeline

Snowpack stability: **poor**

Frequency: **some**

Avalanche size: **large**



New snow

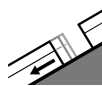


Treeline

Snowpack stability: **very poor**

Frequency: **many**

Avalanche size: **medium**



Gliding snow



2600m

Snowpack stability: **very poor**

Frequency: **some**

Avalanche size: **medium**

Fresh wind slabs represent the main danger. Restraint is advisable on this first sunny day.

Large quantities of fresh snow and the wind-drifted snow can be released easily in all aspects above the tree line. Avalanches can reach large size in isolated cases. The prevalence of the avalanche prone locations will increase with altitude. Caution is to be exercised in particular on steep shady slopes, as well as adjacent to ridgelines and in gullies and bowls. As a consequence of warming during the day and solar radiation numerous loose snow avalanches are to be expected as the day progresses, in particular medium-sized ones.

Avalanches can also be triggered in the old snowpack. Avalanche prone locations are to be found in particular on steep shady slopes above approximately 2400 m. Places where surface hoar has been covered with snow are especially unfavourable. Avalanches can reach large size in isolated cases. In addition small to medium-sized gliding avalanches and wet snow slides are possible, in particular on steep sunny slopes below approximately 2600 m. Areas with glide cracks are to be avoided as far as possible.

## Snowpack

### Danger patterns

dp.6: cold, loose snow and wind

dp.8: surface hoar blanketed with snow

30 to 40 cm of snow, and even more in some localities, has fallen. The wind was storm force in some cases. Fresh wind slabs are lying on soft layers in particular on shady slopes above the tree line. The new snow of the last few days is lying on surface hoar in particular on wind-protected shady slopes above approximately 2400 m. Sunshine and high temperatures will give rise as the day progresses to gradual moistening of the snowpack in particular on steep sunny slopes at intermediate and high altitudes.



Faceted weak layers exist in the centre of the old snowpack in particular on west, north and east facing slopes. This applies above approximately 2400 m.

## Tendency

The fresh wind slabs remain prone to triggering in particular on shady slopes at elevated altitudes. More gliding avalanches and wet snow slides are to be expected.



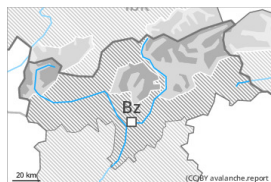
## Danger Level 3 - Considerable



Treeline

**Tendency: Constant avalanche danger** →

on Tuesday 12 03 2024



Wind slab



Treeline

Snowpack stability: **poor**

Frequency: **some**

Avalanche size: **medium**



New snow

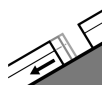


Treeline

Snowpack stability: **very poor**

Frequency: **many**

Avalanche size: **small**



Gliding snow



2600m

Snowpack stability: **very poor**

Frequency: **some**

Avalanche size: **medium**

Fresh wind slabs represent the main danger. Restraint is advisable on this first sunny day.

The new snow and wind slabs can be released easily in all aspects above the tree line. Avalanches can reach medium size. The prevalence of the avalanche prone locations will increase with altitude. Caution is to be exercised in particular on steep shady slopes, as well as adjacent to ridgelines and in gullies and bowls. As a consequence of warming during the day and solar radiation numerous loose snow avalanches are to be expected as the day progresses, but they will be mostly small.

Avalanches can also be triggered in the old snowpack. Avalanche prone locations are to be found in particular on steep shady slopes above approximately 2400 m. Places where surface hoar has been covered with snow are especially unfavourable. Avalanches can reach large size in isolated cases. In addition small to medium-sized gliding avalanches and wet snow slides are possible, in particular on steep sunny slopes below approximately 2600 m. Areas with glide cracks are to be avoided as far as possible.

### Snowpack

**Danger patterns**

dp.6: cold, loose snow and wind

dp.8: surface hoar blanketed with snow

10 to 20 cm of snow, and even more in some localities, has fallen. The wind was storm force in some cases. Fresh wind slabs are lying on soft layers in particular on shady slopes above the tree line. The new snow of the last few days is lying on surface hoar in particular on wind-protected shady slopes above approximately 2400 m. Sunshine and high temperatures will give rise as the day progresses to gradual moistening of the snowpack in particular on steep sunny slopes at intermediate and high altitudes.

Faceted weak layers exist in the centre of the old snowpack in particular on west, north and east facing



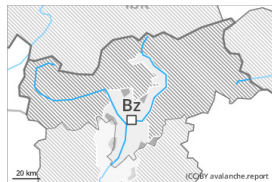
slopes. This applies above approximately 2400 m.

## Tendency

The fresh wind slabs remain prone to triggering in particular on shady slopes at elevated altitudes. More gliding avalanches and wet snow slides are to be expected.



## Danger Level 3 - Considerable



**Tendency: Decreasing avalanche danger**  
on Tuesday 12 03 2024



Wind slab



Treeline

Snowpack stability: **poor**

Frequency: **many**

Avalanche size: **medium**

### Fresh wind slabs represent the main danger.

As a consequence of new snow and a strong to storm force southerly wind, sometimes avalanche prone wind slabs formed. The fresh wind slabs can be released by a single winter sport participant in all aspects above the tree line. The prevalence of the avalanche prone locations will increase with altitude. Mostly avalanches are medium-sized. Caution is to be exercised in particular adjacent to ridgelines and in gullies and bowls. As a consequence of warming during the day and solar radiation loose snow avalanches are to be expected as the day progresses, but they will be mostly small.

In addition a certain danger of gliding avalanches exists, in particular on steep sunny slopes at intermediate and high altitudes. These can in isolated cases reach medium size. Areas with glide cracks are to be avoided as far as possible.

### Snowpack

#### Danger patterns

dp.6: cold, loose snow and wind

dp.8: surface hoar blanketed with snow

The wind was strong to storm force in some cases. 20 to 30 cm of snow, and even more in some localities, has fallen. Fresh wind slabs are lying on soft layers in particular on shady slopes above the tree line.

### Tendency

The fresh wind slabs remain prone to triggering at elevated altitudes.