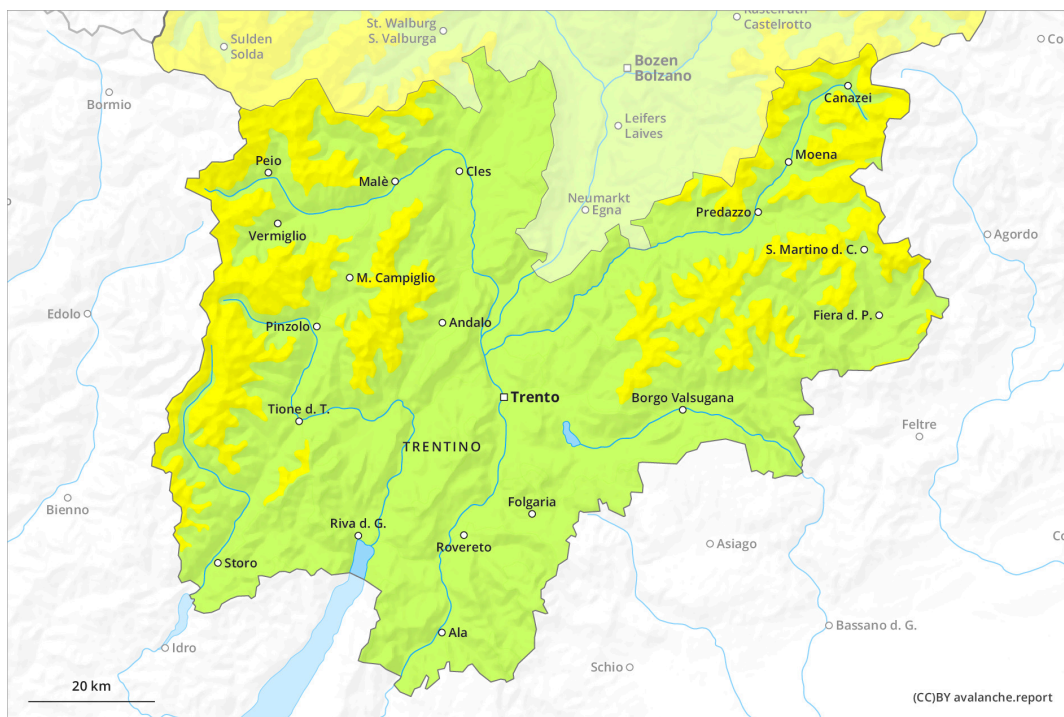
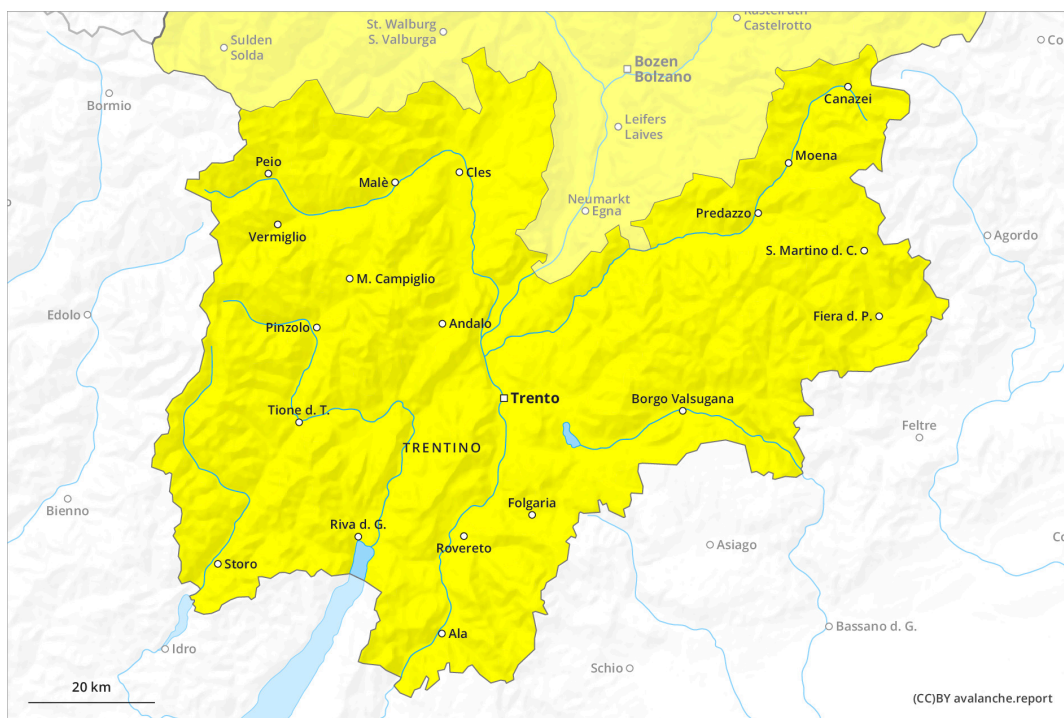




AM



PM

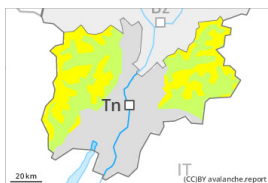


Danger Level 2 - Moderate

AM:



Tendency: Constant avalanche danger →
 on Saturday 16 03 2024



Wind slab



Treeline

Snowpack stability: **poor**
 Frequency: **some**
 Avalanche size: **medium**



Wet snow



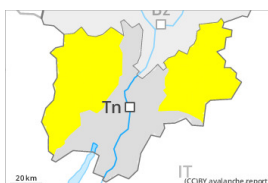
2500m

Snowpack stability: **poor**
 Frequency: **few**
 Avalanche size: **small**

PM:



Tendency: Constant avalanche danger →
 on Saturday 16 03 2024



Wind slab



Treeline

Snowpack stability: **poor**
 Frequency: **some**
 Avalanche size: **medium**



Wet snow



2500m

Snowpack stability: **poor**
 Frequency: **some**
 Avalanche size: **medium**

The wind slabs must be evaluated with care and prudence in all aspects at intermediate and high altitudes. The danger of moist snow slides and avalanches will increase during the day.

Below approximately 2500 m small and, in isolated cases, medium-sized moist and wet avalanches are possible. As the day progresses as a consequence of warming during the day and solar radiation there will be a gradual increase in the danger of moist and wet avalanches, in particular on steep sunny slopes above the tree line, as well as on steep east, south and west facing slopes. Individual gliding avalanches can also occur. In the regions with a lot of snow dry slab avalanches are possible, even medium-sized ones. The new snow and wind slabs of the last few days can be released, especially by large additional loads, in all aspects at high altitudes and in high Alpine regions. These can in isolated cases reach medium size. The prevalence of the avalanche prone locations will increase with altitude. Caution is to be exercised in particular adjacent to ridgelines and in gullies and bowls, as well as in places that are protected from the wind.

Snowpack

Danger patterns

dp.10: springtime scenario

Outgoing longwave radiation during the night will be quite good. The solar radiation will give rise as the day



progresses to gradual moistening of the snowpack in particular on steep sunny slopes at intermediate altitudes.

As a consequence of the occasionally strong wind, the snow drift accumulations have increased in size during the last few days. The new snow and wind slabs of the last few days are lying on soft layers above approximately 2200 m. The weather conditions gave rise to gradual settling of the snowpack.

In all regions below the tree line a little snow is lying.

Tendency

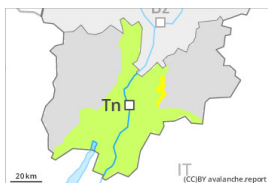
The weather conditions will facilitate a gradual strengthening of the snowpack. Gradual decrease in danger of dry avalanches. More gliding avalanches and moist snow slides are possible, in particular medium-sized ones.

Danger Level 2 - Moderate

AM:



Tendency: Constant avalanche danger →
 on Saturday 16 03 2024



Wet snow



Snowpack stability: **poor**
 Frequency: **few**
 Avalanche size: **small**



Wind slab

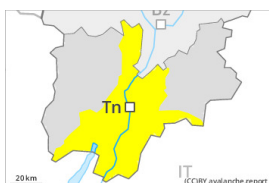


Snowpack stability: **poor**
 Frequency: **some**
 Avalanche size: **medium**

PM:



Tendency: Constant avalanche danger →
 on Saturday 16 03 2024



Wet snow



Snowpack stability: **poor**
 Frequency: **some**
 Avalanche size: **medium**



Wind slab



Snowpack stability: **poor**
 Frequency: **some**
 Avalanche size: **medium**

The danger of moist avalanches will increase during the day. The fresh and older wind slabs must be evaluated with care and prudence.

As a consequence of warming moist and wet avalanches are possible as the day progresses, but they can reach medium size in some cases, in particular on steep sunny slopes, as well as at the base of rock walls in all altitude zones. Individual gliding avalanches can also occur.

The new snow and wind slabs of the weekend are to be evaluated with care and prudence in all aspects at high altitudes and in high Alpine regions. Avalanches can be triggered in near-surface layers and reach medium size in all aspects. Caution is to be exercised in particular adjacent to ridgelines and in gullies and bowls, as well as in places that are protected from the wind.

Snowpack

Danger patterns

dp.10: springtime scenario

Outgoing longwave radiation during the night will be quite good. The solar radiation will give rise as the day progresses to gradual moistening of the snowpack in particular on steep sunny slopes at intermediate altitudes. At low and intermediate altitudes a little snow is lying.

Tendency



The weather conditions will facilitate a gradual strengthening of the snowpack. Gradual decrease in danger of dry avalanches. More gliding avalanches and moist snow slides are possible, even medium-sized ones.