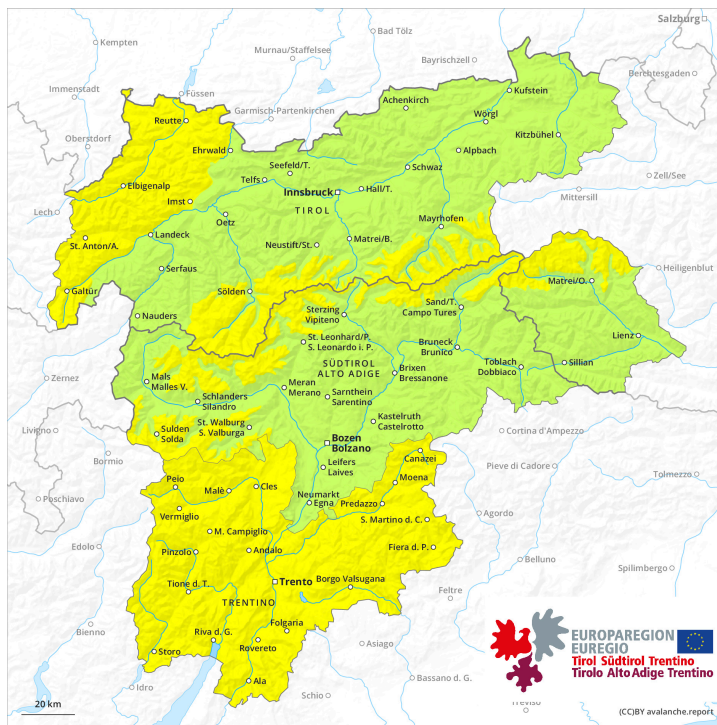
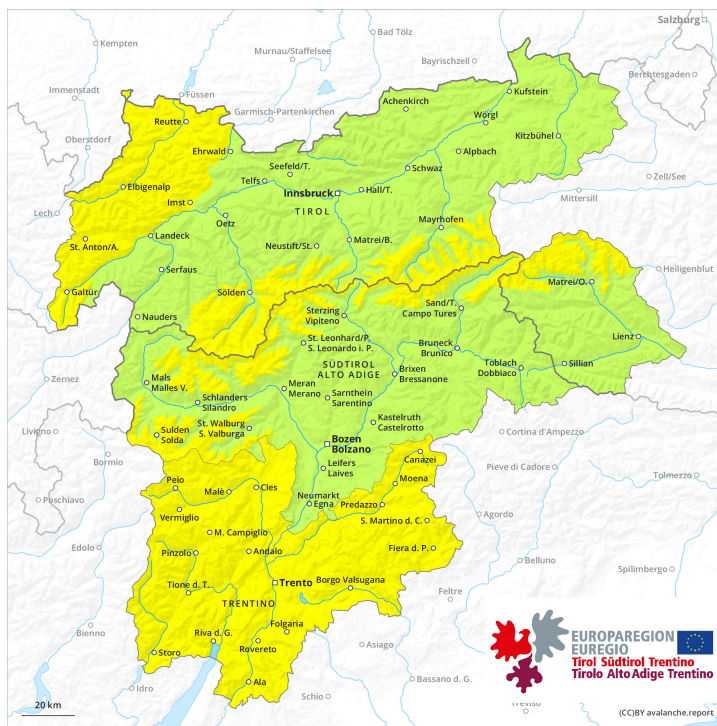




AM



PM



Danger Level 2 - Moderate

AM:



Tendency: Constant avalanche danger →
 on Sunday 17 03 2024



Wind slab



2500m

Snowpack stability: **poor**

Frequency: **some**

Avalanche size: **medium**



Wet snow



2500m

Snowpack stability: **poor**

Frequency: **some**

Avalanche size: **small**

PM:



Tendency: Constant avalanche danger →
 on Sunday 17 03 2024



Wind slab



2500m

Snowpack stability: **poor**

Frequency: **some**

Avalanche size: **medium**



Wet snow



2500m

Snowpack stability: **poor**

Frequency: **some**

Avalanche size: **medium**

The wind slabs must be evaluated with care and prudence in all aspects at high altitudes and in high Alpine regions. The danger of moist snow slides and avalanches will increase during the day.

Below approximately 2500 m small and, in isolated cases, medium-sized moist and wet avalanches are possible. As the day progresses as a consequence of warming there will be a gradual increase in the danger of moist and wet avalanches, in particular on steep sunny slopes above the tree line, as well as on steep east, south and west facing slopes. Individual gliding avalanches can also occur.

In the regions with a lot of snow dry slab avalanches are possible, even medium-sized ones. These can be released, especially by large additional loads,, especially on steep shady slopes at high altitudes and in high Alpine regions. These can in isolated cases reach medium size. The prevalence of the avalanche prone locations will increase with altitude. Caution is to be exercised in particular adjacent to ridgelines and in gullies and bowls, as well as in places that are protected from the wind.

Snowpack

Danger patterns

dp.10: springtime scenario

Outgoing longwave radiation during the night will be reduced. The weather conditions from the early morning will give rise to gradual moistening of the snowpack in particular on very steep slopes. This applies



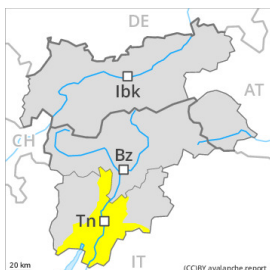
in particular below approximately 2500 m in all aspects. At low and intermediate altitudes a little snow is lying.

Tendency

The weather conditions will facilitate a gradual strengthening of the snowpack. Gradual decrease in danger of dry avalanches. More gliding avalanches and moist snow slides are possible, in particular medium-sized ones.

Danger Level 2 - Moderate

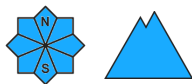
AM:



Tendency: Constant avalanche danger →
 on Sunday 17 03 2024



Wet snow



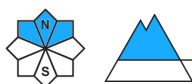
Snowpack stability: **poor**

Frequency: **few**

Avalanche size: **medium**



Wind slab



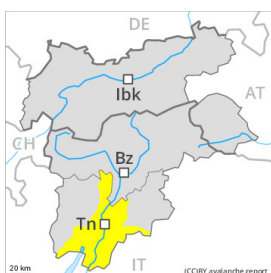
Treeline

Snowpack stability: **poor**

Frequency: **few**

Avalanche size: **medium**

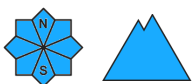
PM:



Tendency: Constant avalanche danger →
 on Sunday 17 03 2024



Wet snow



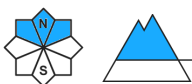
Snowpack stability: **poor**

Frequency: **some**

Avalanche size: **medium**



Wind slab



Treeline

Snowpack stability: **poor**

Frequency: **some**

Avalanche size: **medium**

The danger of moist avalanches will increase during the day. The fresh and older wind slabs must be evaluated with care and prudence.

As a consequence of warming moist and wet avalanches are possible as the day progresses, but they can reach medium size in some cases, in particular on steep sunny slopes, as well as at the base of rock walls in all altitude zones. Individual gliding avalanches can also occur.

The wind slabs of the last few days are to be evaluated with care and prudence on very steep shady slopes at elevated altitudes. Caution is to be exercised in particular adjacent to ridgelines and in gullies and bowls, as well as in places that are protected from the wind.

Snowpack

Danger patterns dp.10: springtime scenario

Outgoing longwave radiation during the night will be reduced. The weather conditions from the early morning will give rise to gradual moistening of the snowpack in particular on very steep slopes. At low and intermediate altitudes a little snow is lying.

Tendency

The weather conditions will facilitate a gradual strengthening of the snowpack. Gradual decrease in danger

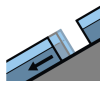


of dry avalanches. More gliding avalanches and moist snow slides are possible, even medium-sized ones.

Danger Level 2 - Moderate



Tendency: Constant avalanche danger →
 on Sunday 17 03 2024



Gliding snow



2600m

Snowpack stability: **very poor**

Frequency: **few**

Avalanche size: **large**



Wind slab



2400m

Snowpack stability: **poor**

Frequency: **some**

Avalanche size: **small**

Gliding snow requires caution. Adjacent to ridgelines sometimes avalanche prone wind slabs will form.

From origins in starting zones where no previous releases have taken place more gliding avalanches are possible, even large ones in isolated cases. This applies on steep grassy slopes below approximately 2600 m. Caution is to be exercised in areas with glide cracks.

Fresh wind slabs can be released by a single winter sport participant in some cases on very steep shady slopes above approximately 2400 m. Especially slopes adjacent to ridgelines are unfavourable. At elevated altitudes the likelihood of avalanches being released is greater. Mostly avalanches are rather small.

As a consequence of warming during the day and solar radiation more frequent loose snow avalanches are to be expected, but they will be mostly small.

Snowpack

Danger patterns

dp.2: gliding snow

dp.6: cold, loose snow and wind

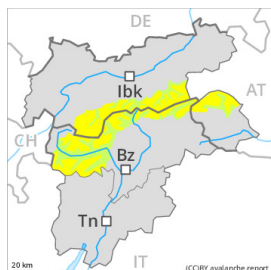
10 to 20 cm of snow, and even more in some localities, will fall above approximately 2000 m. The wind will be moderate to strong. Fresh wind slabs are lying on soft layers on near-ridge shady slopes above approximately 2400 m.

The high humidity will give rise as the day progresses to moistening of the snowpack below approximately 2200 m. This also applies on steep sunny slopes at elevated altitudes. The old snowpack will be well bonded over a wide area.

Tendency

Slight decrease in danger of dry avalanches. Slight increase in danger of moist and wet avalanches as a consequence of warming during the day and solar radiation. Gliding avalanches can also occur.

Danger Level 2 - Moderate



Tendency: Constant avalanche danger →
 on Sunday 17 03 2024



Wind slab



Snowpack stability: **poor**

Frequency: **some**

Avalanche size: **medium**



Wet snow



Snowpack stability: **very poor**

Frequency: **few**

Avalanche size: **small**

Wind slabs represent the main danger. Wet and gliding snow require caution.

The fresh and older wind slabs can be released by a single winter sport participant in some cases in particular on very steep shady slopes above approximately 2600 m. Avalanches can in isolated cases reach medium size. The prevalence of the avalanche prone locations will increase with altitude. Especially slopes adjacent to ridgelines are unfavourable. Avalanches can in very isolated cases be triggered in the old snowpack and reach quite a large size. Avalanche prone locations are to be found in particular on steep shady slopes above approximately 2600 m.

As a consequence of warming during the day and solar radiation more frequent wet loose snow avalanches are to be expected as the day progresses.

From origins in starting zones where no previous releases have taken place more gliding avalanches are possible, even medium-sized ones. This applies in particular on steep sunny slopes below approximately 2600 m. Caution is to be exercised in areas with glide cracks.

Snowpack

Danger patterns

dp.6: cold, loose snow and wind

dp.10: springtime scenario

In the north 5 to 10 cm of snow, and even more in some localities, will fall above approximately 2000 m. The wind will be moderate to strong. Fresh and somewhat older wind slabs are lying on soft layers on wind-protected shady slopes above approximately 2600 m. The older wind slabs are lying on surface hoar in some places on shady slopes at elevated altitudes. Faceted weak layers exist in the centre of the old snowpack in particular on west, north and east facing slopes.

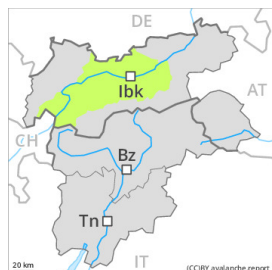
Outgoing longwave radiation during the night will be reduced in some case. The spring-like weather conditions as the day progresses will give rise to increasing moistening of the snowpack below approximately 2400 m. This also applies on steep sunny slopes at elevated altitudes.



Tendency

Further decrease in danger of dry avalanches. Slight increase in danger of moist and wet avalanches as a consequence of warming during the day and solar radiation. Gliding avalanches can also occur.

Danger Level 1 - Low



Tendency: Constant avalanche danger →
on Sunday 17 03 2024



Wind slab

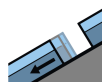


2600m

Snowpack stability: **poor**

Frequency: **few**

Avalanche size: **small**



Gliding snow



2600m

Snowpack stability: **very poor**

Frequency: **few**

Avalanche size: **medium**

Adjacent to ridgelines small wind slabs will form. Gliding snow requires caution.

Fresh wind slabs can be released by a single winter sport participant in isolated cases on very steep shady slopes above approximately 2600 m, especially adjacent to ridgelines. Mostly avalanches are only small. Even a small avalanche can sweep winter sport participants along and give rise to falls.

On steep grassy slopes individual gliding avalanches are possible, in particular medium-sized ones. Areas with glide cracks are to be avoided.

As a consequence of warming during the day and solar radiation wet loose snow avalanches are possible, but they will be mostly small.

Snowpack

Danger patterns

dp.6: cold, loose snow and wind

dp.2: gliding snow

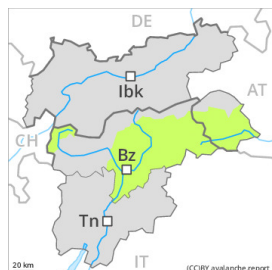
Up to 10 cm of snow will fall above approximately 2000 m. The wind will be moderate to strong. Fresh wind slabs are lying on soft layers on near-ridge shady slopes at elevated altitudes.

The high humidity will give rise as the day progresses to moistening of the snowpack below approximately 2200 m. This also applies on steep sunny slopes at elevated altitudes. The old snowpack will be well bonded over a wide area.

Tendency

Slight increase in danger of moist and wet avalanches as a consequence of warming during the day and solar radiation. Gliding avalanches can also occur.

Danger Level 1 - Low



Tendency: Constant avalanche danger →
on Sunday 17 03 2024



Wet snow

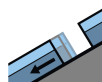


2600m

Snowpack stability: **very poor**

Frequency: **few**

Avalanche size: **small**



Gliding snow



2600m

Snowpack stability: **very poor**

Frequency: **few**

Avalanche size: **medium**

Wet and gliding snow require caution. Individual avalanche prone locations for dry avalanches are to be found on extremely steep shady slopes at elevated altitudes.

As a consequence of warming during the day and solar radiation more frequent wet loose snow avalanches are possible, but they will be mostly small.

On steep grassy slopes individual gliding avalanches are possible, even medium-sized ones. This applies in particular on steep sunny slopes below approximately 2600 m. Caution is to be exercised in areas with glide cracks.

Wind slabs can be released in isolated cases, but mostly only by large additional loads, on extremely steep shady slopes above approximately 2600 m. Caution is to be exercised adjacent to ridgelines.

Snowpack

Danger patterns

dp.10: springtime scenario

dp.2: gliding snow

Outgoing longwave radiation during the night will be reduced in some case. The spring-like weather conditions as the day progresses will give rise to increasing moistening of the snowpack below approximately 2400 m. This also applies on steep sunny slopes at elevated altitudes.

Wind slabs have bonded well with the old snowpack. They are only small and unlikely to be released now. At low and intermediate altitudes only a little snow is now lying.

Tendency

Slight increase in danger of moist and wet avalanches as a consequence of warming during the day and solar radiation. Gliding avalanches can also occur.

Danger Level 1 - Low



Tendency: Constant avalanche danger →
on Sunday 17 03 2024

Low avalanche danger will prevail.

On steep grassy slopes individual gliding avalanches are possible. Areas with glide cracks are to be avoided.

As a consequence of warming during the day and solar radiation individual loose snow avalanches are possible, but they will be mostly small. This applies in particular on extremely steep sunny slopes.

Snowpack

Up to 10 cm of snow will fall above approximately 2000 m. The wind will be moderate to strong. Fresh wind slabs are bonding well with the old snowpack.

The spring-like weather conditions as the day progresses will give rise to moistening of the snowpack. The old snowpack will be well bonded over a wide area.

Below the tree line only a little snow is now lying.

Tendency

Slight increase in danger of moist and wet avalanches as a consequence of warming during the day and solar radiation.