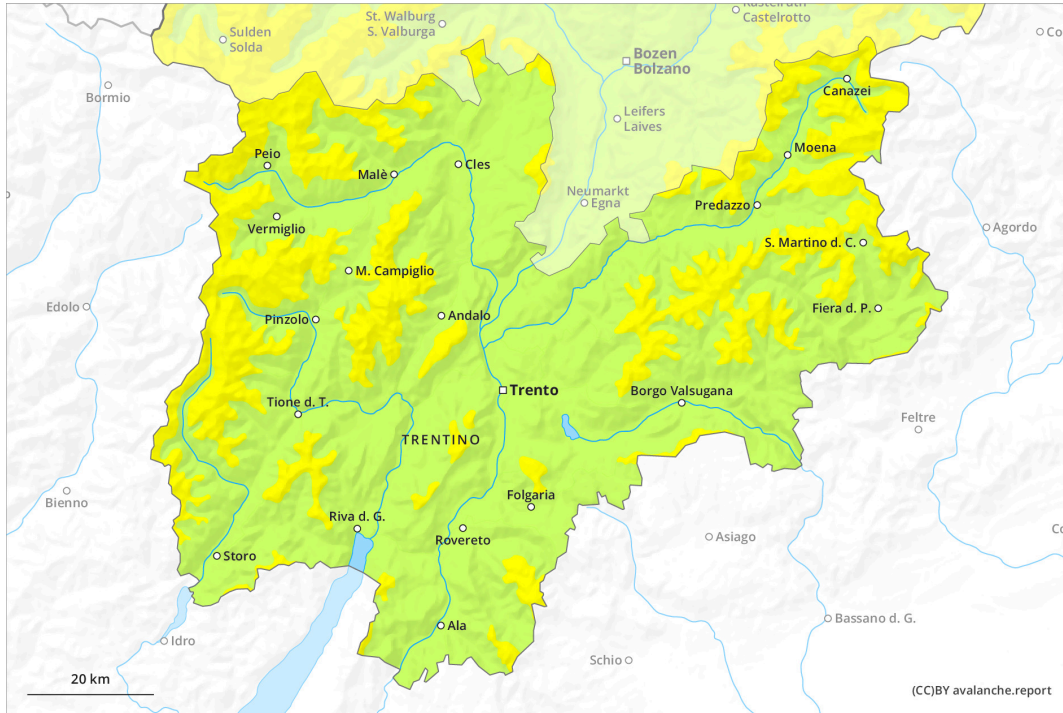
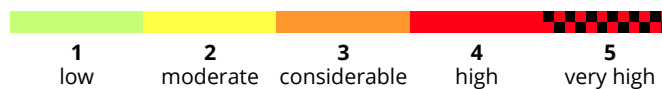
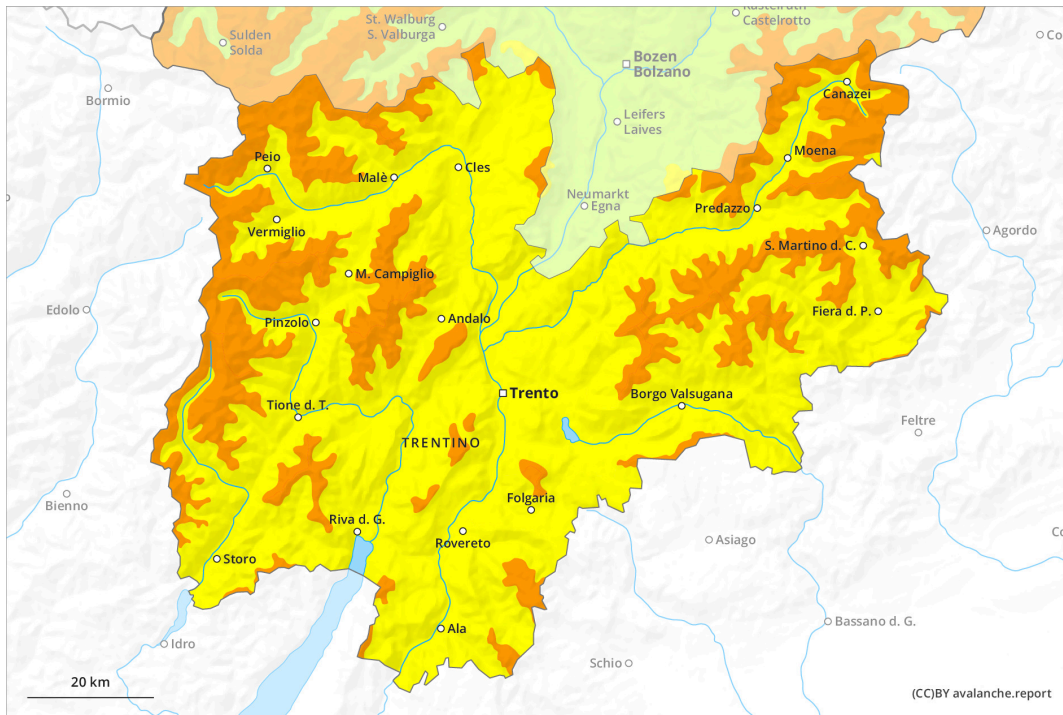




AM



PM



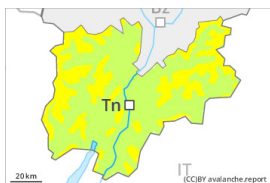


Danger Level 3 - Considerable

AM:



Tendency: Increasing avalanche danger on Thursday 28 03 2024



Wind slab



Treeline

Snowpack stability: **poor**

Frequency: **some**

Avalanche size: **medium**



Wet snow



Treeline

Snowpack stability: **poor**

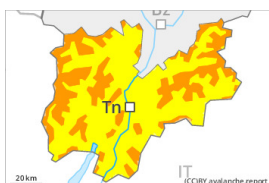
Frequency: **few**

Avalanche size: **small**

PM:



Tendency: Increasing avalanche danger on Thursday 28 03 2024



Wind slab



Treeline

Snowpack stability: **poor**

Frequency: **some**

Avalanche size: **large**



Wet snow



Treeline

Snowpack stability: **poor**

Frequency: **some**

Avalanche size: **medium**

New snow and wind slabs require caution. The avalanche danger will increase during the day.

The large quantity of fresh snow and in particular the wind slabs formed during the snowfall can be released by a single winter sport participant in all aspects above the tree line, in particular in gullies and bowls, and behind abrupt changes in the terrain. In addition medium-sized loose snow avalanches are possible. Areas with glide cracks are to be avoided as far as possible.

Snowpack

Danger patterns

dp.6: cold, loose snow and wind

In some localities over a wide area 20 to 40 cm of snow, and even more in some localities, will fall above approximately 1500 m. The wind will be strong to storm force at times.

Fresh wind slabs will be deposited on the unfavourable surface of an old snowpack in all aspects above the tree line.

The old snowpack will be moist below approximately 2400 m.

Tendency

Some snow will fall on Thursday in some localities. New snow and wind slabs require caution. The



avalanche danger will persist.