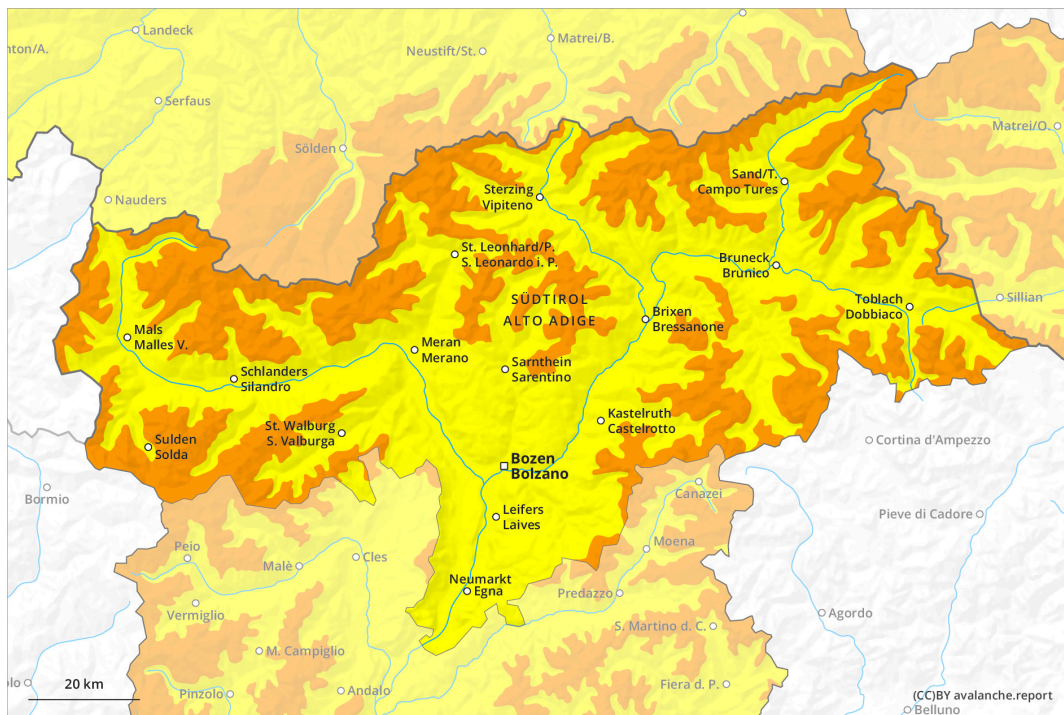
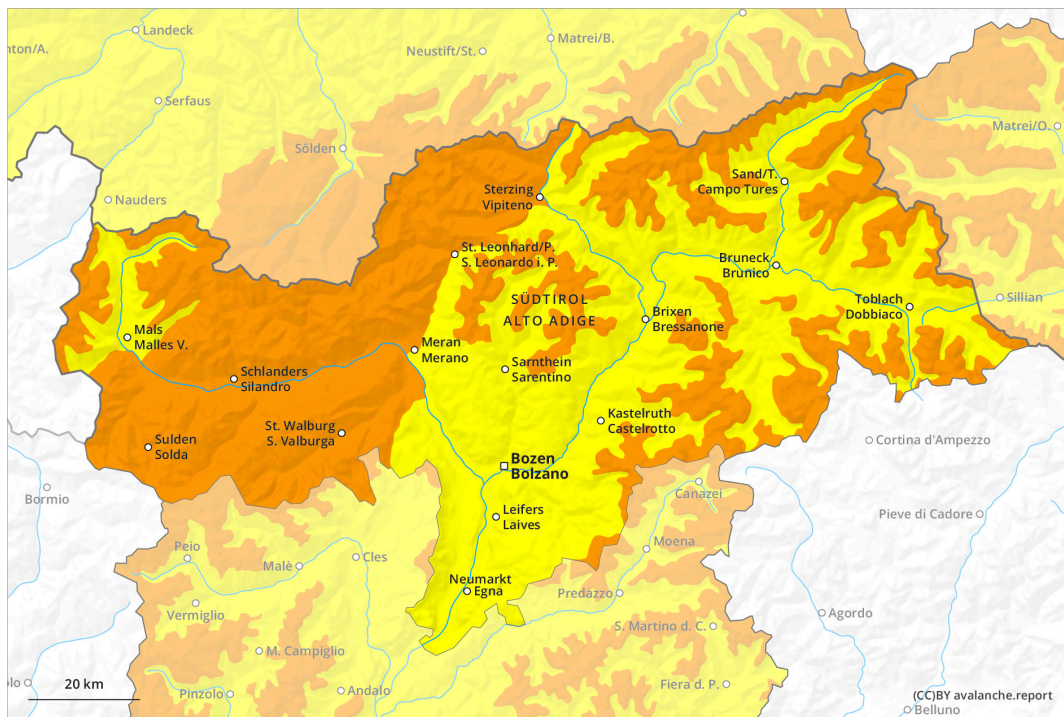




AM



PM

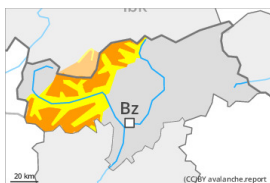


Danger Level 3 - Considerable

AM:



Tendency: Constant avalanche danger →
 on Sunday 31 03 2024



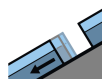
Wind slab



Snowpack stability: **very poor**

Frequency: **some**

Avalanche size: **medium**



Gliding snow



Snowpack stability: **very poor**

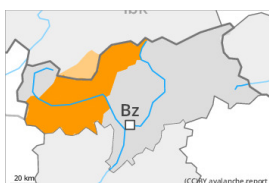
Frequency: **some**

Avalanche size: **medium**

PM:



Tendency: Constant avalanche danger →
 on Sunday 31 03 2024



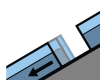
Wind slab



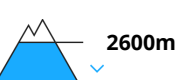
Snowpack stability: **very poor**

Frequency: **some**

Avalanche size: **large**



Gliding snow



Snowpack stability: **very poor**

Frequency: **some**

Avalanche size: **large**



Wet snow



Snowpack stability: **very poor**

Frequency: **few**

Avalanche size: **medium**

A precarious avalanche situation will prevail. Significant increase in avalanche danger as a consequence of the precipitation.

As a consequence of new snow and a strong wind, further wind slabs will form from the middle of the day in all aspects. These can be released easily or naturally. Caution is to be exercised in particular in gullies and bowls, and behind abrupt changes in the terrain above the tree line, and in areas close to the tree line. The prevalence of avalanche prone locations and likelihood of triggering will increase with altitude. In some cases avalanches are large.

On steep grassy slopes medium-sized and, in isolated cases, large gliding avalanches are possible. This applies especially on steep sunny slopes below approximately 2600 m, including on steep shady slopes below approximately 2200 m. Areas with glide cracks are to be avoided.

As a consequence of the heavy rain more frequent moist loose snow avalanches are to be expected from midday, even medium-sized ones. This applies in particular on extremely steep slopes in all aspects below



the tree line.

Backcountry touring calls for very extensive experience and restraint.

Snowpack

Danger patterns

dp.6: cold, loose snow and wind

dp.2: gliding snow

30 to 40 cm of snow, and even more in some localities, will fall from midday. This applies in particular above the tree line.

Fresh and somewhat older wind slabs are lying on soft layers in all aspects at elevated altitudes.

The rain will give rise to a loss of strength within the snowpack.

Tendency

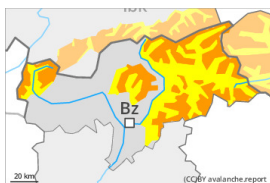
A critical avalanche situation will be encountered over a wide area. 10 to 15 cm of snow, and even more in some localities, will fall. As a consequence of new snow and strong wind there will be an increase in the avalanche danger within the current danger level. High altitudes and the high Alpine regions: New snow and wind slabs represent the main danger. Below approximately 2600 m: Wet and gliding snow require caution.

Danger Level 3 - Considerable

AM:



Tendency: Constant avalanche danger →
 on Sunday 31 03 2024



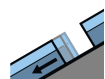
Wind slab



Snowpack stability: **poor**

Frequency: **many**

Avalanche size: **medium**



Gliding snow



Snowpack stability: **very poor**

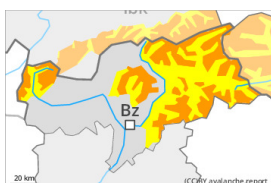
Frequency: **some**

Avalanche size: **medium**

PM:



Tendency: Constant avalanche danger →
 on Sunday 31 03 2024



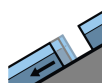
Wind slab



Snowpack stability: **poor**

Frequency: **many**

Avalanche size: **medium**



Gliding snow



Snowpack stability: **very poor**

Frequency: **some**

Avalanche size: **medium**

Increase in avalanche danger as a consequence of the precipitation.

As a consequence of new snow and a strong wind, further wind slabs will form from the middle of the day in particular on west, north and east facing slopes. These can be released easily. Caution is to be exercised in particular in gullies and bowls, and behind abrupt changes in the terrain above approximately 2200 m. The prevalence of avalanche prone locations and likelihood of triggering will increase with altitude. Mostly avalanches are medium-sized.

On steep grassy slopes medium-sized and, in isolated cases, large gliding avalanches are possible. This applies especially on steep sunny slopes below approximately 2600 m, including on steep shady slopes below approximately 2200 m. Areas with glide cracks are to be avoided.

As a consequence of the rain individual moist loose snow slides are to be expected from midday. This applies in particular on extremely steep slopes in all aspects below the tree line.

Backcountry touring calls for experience and restraint.

Snowpack

Danger patterns

dp.6: cold, loose snow and wind

dp.2: gliding snow



10 to 20 cm of snow, and even more in some localities, will fall from midday. This applies in particular above the tree line.

Fresh and somewhat older wind slabs are lying on soft layers in particular on west to north to east facing aspects at elevated altitudes.

The rain will give rise to a loss of strength within the snowpack.

Tendency

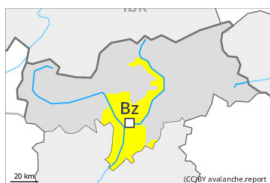
Up to 10 cm of snow, and even more in some localities, will fall. High altitudes and the high Alpine regions: Wind slabs represent the main danger. Below approximately 2600 m: Wet and gliding snow require caution.

Danger Level 2 - Moderate

AM:



Tendency: Constant avalanche danger →
 on Sunday 31 03 2024



Wind slab

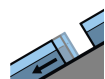


2400m

Snowpack stability: **poor**

Frequency: **some**

Avalanche size: **medium**



Gliding snow



2600m

Snowpack stability: **very poor**

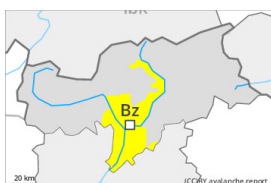
Frequency: **some**

Avalanche size: **medium**

PM:



Tendency: Constant avalanche danger →
 on Sunday 31 03 2024



Wind slab

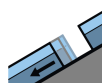


2200m

Snowpack stability: **poor**

Frequency: **some**

Avalanche size: **medium**



Gliding snow



2600m

Snowpack stability: **very poor**

Frequency: **some**

Avalanche size: **medium**

Increase in avalanche danger as a consequence of the precipitation.

As a consequence of new snow and a strong wind, further wind slabs will form from the middle of the day in particular on west, north and east facing slopes. These can be released easily. Caution is to be exercised in particular in gullies and bowls, and behind abrupt changes in the terrain above approximately 2200 m. The prevalence of avalanche prone locations and likelihood of triggering will increase with altitude. Mostly avalanches are medium-sized.

On steep grassy slopes small to medium-sized gliding avalanches are possible. This applies especially on steep sunny slopes below approximately 2600 m, including on steep shady slopes below approximately 2200 m. Areas with glide cracks are to be avoided.

As a consequence of the rain individual moist loose snow slides are to be expected from midday. This applies in particular on extremely steep slopes in all aspects below the tree line.

Backcountry touring calls for experience and restraint.

Snowpack

Danger patterns

dp.6: cold, loose snow and wind

dp.2: gliding snow



10 to 20 cm of snow, and even more in some localities, will fall from midday. This applies in particular above the tree line.

Fresh and somewhat older wind slabs are lying on soft layers in particular on west to north to east facing aspects at elevated altitudes.

The rain will give rise to a loss of strength within the snowpack.

Tendency

Up to 10 cm of snow, and even more in some localities, will fall. High altitudes: Wind slabs represent the main danger. Below approximately 2600 m: Wet and gliding snow require caution.