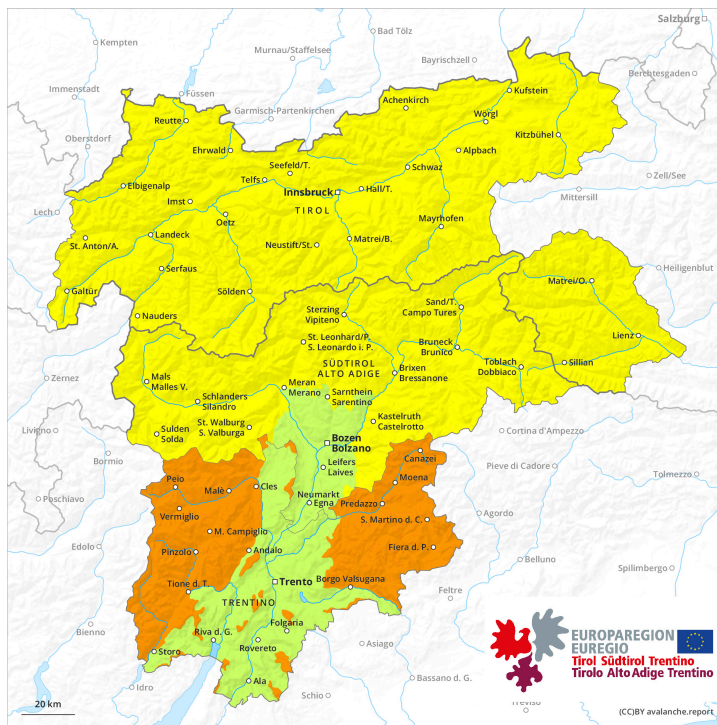
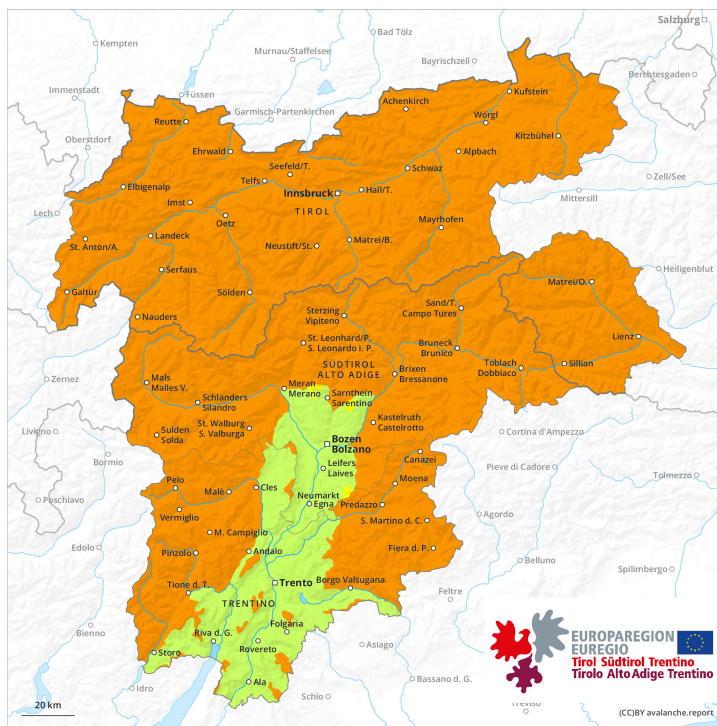




AM



PM



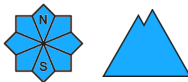
Danger Level 3 - Considerable



Tendency: Constant avalanche danger →
on Monday 08 04 2024



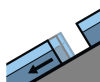
Wet snow



Snowpack stability: **very poor**

Frequency: **many**

Avalanche size: **medium**



Gliding snow



2600m

Snowpack stability: **poor**

Frequency: **some**

Avalanche size: **large**

Wet and gliding avalanches are the main danger. Wet and gliding snow require caution.

As a consequence of warming during the day and the solar radiation, the likelihood of gliding avalanches and wet snow slides being released will increase quickly in all aspects. In isolated cases, wet avalanches can reach intermediate altitudes in steep gullies.

On steep grassy slopes medium-sized and large gliding avalanches are possible. This applies on steep sunny slopes in all altitude zones, as well as on steep shady slopes below approximately 2600 m. Areas with glide cracks are to be avoided.

Snowpack

Danger patterns

dp.10: springtime scenario

dp.2: gliding snow

Outgoing longwave radiation during the night was reduced. The surface of the snowpack is not frozen and will already be soft in the early morning. Sunshine and high temperatures will give rise as the day progresses to extreme and thorough wetting of the snowpack. This applies on sunny slopes in all altitude zones, as well as on shady slopes also at intermediate and high altitudes.

Tendency

Until Monday the weather will be exceptionally warm. The danger of wet and gliding avalanches will persist.

Danger Level 3 - Considerable

AM:



Tendency: Constant avalanche danger →
 on Monday 08 04 2024



Wet snow

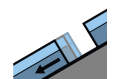


2200m

Snowpack stability: **very poor**

Frequency: **few**

Avalanche size: **medium**



Gliding snow



2600m

Snowpack stability: **very poor**

Frequency: **some**

Avalanche size: **medium**

PM:



Tendency: Constant avalanche danger →
 on Monday 08 04 2024



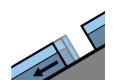
Wet snow



Snowpack stability: **very poor**

Frequency: **some**

Avalanche size: **large**



Gliding snow



2600m

Snowpack stability: **very poor**

Frequency: **few**

Avalanche size: **large**

The weather will be exceptionally warm. The danger of wet avalanches will increase quickly during the day.

As a consequence of warming and solar radiation, the natural activity of wet avalanches will rapidly increase. This applies on steep east and west facing slopes below approximately 2800 m, as well as on steep south facing slopes in all altitude zones, this also applies on shady slopes below approximately 2600 m. In some cases the wet avalanches can release the saturated snowpack and reach large size. In steep gullies avalanches can in some cases reach areas without any snow cover.

On steep grassy slopes more frequent medium-sized and, in isolated cases, large gliding avalanches are possible below approximately 2600 m. Areas with glide cracks are to be avoided.

Backcountry tours and ascents to alpine cabins should be started early and concluded timely.

Snowpack

Danger patterns

dp.10: springtime scenario

dp.2: gliding snow

Over a wide area a clear night. The weather will be exceptionally warm. The surface of the snowpack has frozen to form a strong crust only at high altitudes and will soften quickly. Sunshine and high temperatures



will give rise from late morning to extreme and thorough wetting of the snowpack especially on very steep slopes. These conditions will cause a rapid weakening of the snowpack. In areas with a thinner snowpack the saturation and consequently the loss of strength happens more rapidly.

Hardly any snow is lying at low and intermediate altitudes.

Tendency

The weather will be exceptionally warm. The summery weather conditions will give rise to increasing and thorough wetting of the snowpack at elevated altitudes. The danger of wet and gliding avalanches will persist.

Danger Level 3 - Considerable

AM:



Tendency: Constant avalanche danger →
 on Monday 08 04 2024



Wet snow

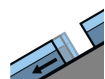


2200m

Snowpack stability: **very poor**

Frequency: **some**

Avalanche size: **small**



Gliding snow



2600m

Snowpack stability: **very poor**

Frequency: **some**

Avalanche size: **medium**

PM:



Tendency: Constant avalanche danger →
 on Monday 08 04 2024



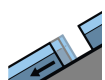
Wet snow



Snowpack stability: **very poor**

Frequency: **some**

Avalanche size: **medium**



Gliding snow



2600m

Snowpack stability: **very poor**

Frequency: **some**

Avalanche size: **large**

The danger of wet avalanches will increase during the day.

As a consequence of warming and solar radiation, the natural activity of wet avalanches will rapidly increase. This applies on steep east, south and west facing slopes, this also applies on shady slopes below approximately 2400 m. The wet avalanches can release the saturated snowpack and reach medium size. In steep gullies avalanches can in isolated cases reach areas without any snow cover.

On steep grassy slopes more frequent medium-sized and, in isolated cases, large gliding avalanches are possible below approximately 2600 m. Areas with glide cracks are to be avoided.

Backcountry tours and ascents to alpine cabins should be started and concluded very early.

Snowpack

Danger patterns

dp.10: springtime scenario

dp.2: gliding snow

The weather will be exceptionally warm. The surface of the snowpack will freeze to form a strong crust only at high altitudes and will already soften in the late morning. Sunshine and high temperatures will give rise from late morning to extreme and thorough wetting of the snowpack especially on very steep slopes. These conditions will cause a rapid weakening of the snowpack. In areas with a thinner snowpack the

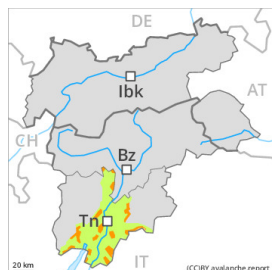


saturation and consequently the loss of strength happens more rapidly.
Hardly any snow is lying at low and intermediate altitudes.

Tendency

The weather will be exceptionally warm. The summery weather conditions will give rise to increasing and thorough wetting of the snowpack at elevated altitudes. The danger of wet and gliding avalanches will persist.

Danger Level 3 - Considerable



Tendency: Constant avalanche danger →
 on Monday 08 04 2024



Wet snow

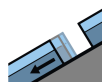


^
Treeline

Snowpack stability: **very poor**

Frequency: **some**

Avalanche size: **medium**



Gliding snow



^
2000m

Snowpack stability: **very poor**

Frequency: **few**

Avalanche size: **medium**

Gliding avalanches and moist snow slides are the main danger.

On steep grassy slopes medium-sized gliding avalanches are possible. As a consequence of warming during the day and the solar radiation, the likelihood of gliding avalanches and wet snow slides being released will increase quickly in all aspects, not only on sunny slopes, including on steep shady slopes at intermediate and high altitudes. In isolated cases, wet avalanches can reach intermediate altitudes in steep gullies. Areas with glide cracks are to be avoided.

Snowpack

Danger patterns

dp.10: springtime scenario

dp.2: gliding snow

Outgoing longwave radiation during the night will be reduced in some case. The surface of the snowpack will freeze very little and will already be soft in the early morning. This applies on sunny slopes in all altitude zones, as well as on shady slopes also at intermediate and high altitudes.

Tendency

Until Monday the weather will be exceptionally warm. The danger of wet and gliding avalanches will persist.

Danger Level 2 - Moderate



Tendency: Constant avalanche danger →
on Monday 08 04 2024



Wet snow



Snowpack stability: **very poor**

Frequency: **few**

Avalanche size: **medium**

The weather will be exceptionally warm. The danger of wet avalanches will increase quickly during the day.

As a consequence of warming and solar radiation, the natural activity of wet avalanches will rapidly increase. This applies in all aspects. In some cases the wet avalanches can release the saturated snowpack and reach medium size in isolated cases. On steep grassy slopes small and, in isolated cases, medium-sized gliding avalanches are possible.

Snowpack

Danger patterns

dp.10: springtime scenario

Over a wide area a clear night. The weather will be exceptionally warm. The surface of the snowpack has frozen to form a strong crust only at high altitudes and will soften quickly. These conditions will cause a rapid weakening of the snowpack. Hardly any snow is lying at low and intermediate altitudes.

Tendency

The weather will be exceptionally warm. The danger of wet and gliding avalanches will persist.