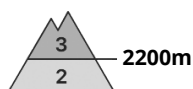
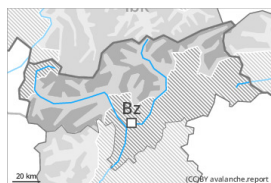




## Danger Level 3 - Considerable



**Tendency: Decreasing avalanche danger**  
on Thursday 11 04 2024



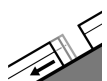
New snow



Snowpack stability: **poor**

Frequency: **some**

Avalanche size: **medium**



Gliding snow



Frequency: **few**

Avalanche size: **medium**

As a consequence of the new snow there will be an increase in the danger of dry avalanches.

Weak layers in the new snow represent the main danger. The large quantity of fresh snow and local mostly small wind slabs can be released by a single winter sport participant in all aspects above approximately 2200 m. In isolated cases avalanches can release the saturated snowpack. This applies in particular on steep sunny slopes below approximately 2800 m, as well as on steep shady slopes below approximately 2400 m. Mostly the avalanches in these locations are medium-sized. More frequent loose snow avalanches are to be expected. In the event of prolonged bright spells this applies in particular.

With the end of the intense snowfall, the activity of gliding avalanches will increase. This applies in particular on steep, snow-free grassy slopes below approximately 2600 m. Areas with glide cracks are to be avoided.

## Snowpack

### Danger patterns

dp.6: cold, loose snow and wind

Down to intermediate altitudes snow will fall. 20 to 50 cm of snow, and even more in some localities, will fall until Wednesday above approximately 1600 m. The wind will be light to moderate. The wind will be strong in the south. Large quantities of fresh snow and the wind-drifted snow will be deposited on the wet surface of an old snowpack. This applies in particular on sunny slopes below approximately 2800 m, as well as on shady slopes below approximately 2400 m.

## Tendency

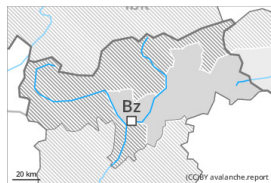
As a consequence of mild temperatures and solar radiation the snowpack consolidated on Thursday. Gradual increase in danger of wet avalanches.



## Danger Level 2 - Moderate

**Tendency: Decreasing avalanche danger**

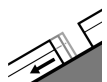
on Thursday 11 04 2024



New snow



2200m

Snowpack stability: **poor**Frequency: **some**Avalanche size: **medium**

Gliding snow



2600m

Frequency: **few**Avalanche size: **medium**

As a consequence of the new snow there will be an increase in the danger of dry avalanches.

Weak layers in the new snow represent the main danger. The fresh snow and local small wind slabs can be released by a single winter sport participant in some cases in all aspects above approximately 2200 m. In isolated cases avalanches can release the saturated snowpack. This applies in particular on steep sunny slopes below approximately 2800 m, as well as on steep shady slopes below approximately 2400 m. Sometimes the avalanches in these locations are medium-sized. In the regions exposed to heavier precipitation and in the regions neighbouring those that are subject to danger level 3 (considerable) the danger is a little higher.

More frequent loose snow avalanches are to be expected. In the event of prolonged bright spells this applies in particular. Mostly the avalanches are only small.

With the end of the snowfall, the activity of gliding avalanches will increase. This applies in particular on steep, snow-free grassy slopes below approximately 2600 m. Areas with glide cracks are to be avoided.

## Snowpack

### Danger patterns

dp.6: cold, loose snow and wind

Down to intermediate altitudes snow will fall. 15 to 30 cm of snow, and even more in some localities, will fall until Wednesday above approximately 1400 m. The wind will be light to moderate. Large quantities of fresh snow and the wind-drifted snow will be deposited on the wet surface of an old snowpack. This applies in particular on sunny slopes below approximately 2800 m, as well as on shady slopes below approximately 2400 m.

## Tendency

As a consequence of mild temperatures and solar radiation the snowpack consolidated on Thursday. Gradual increase in danger of wet avalanches.



## Danger Level 2 - Moderate

**Tendency: Decreasing avalanche danger**

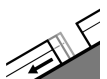
on Thursday 11 04 2024



New snow



2200m

Snowpack stability: **poor**Frequency: **few**Avalanche size: **medium**

Gliding snow



2600m

Frequency: **few**Avalanche size: **medium**

As a consequence of the new snow there will be an increase in the danger of dry avalanches.

Weak layers in the new snow represent the main danger. The fresh snow and local mostly small wind slabs can be released by a single winter sport participant in some cases in all aspects above approximately 2200 m. In isolated cases avalanches can release the saturated snowpack. This applies in particular on steep sunny slopes below approximately 2800 m, as well as on steep shady slopes below approximately 2400 m. In isolated cases the avalanches in these locations are medium-sized. More frequent loose snow avalanches are to be expected. In the event of prolonged bright spells this applies in particular.

With the end of the snowfall, the activity of gliding avalanches will increase. This applies in particular on steep, snow-free grassy slopes below approximately 2600 m. Areas with glide cracks are to be avoided.

### Snowpack

**Danger patterns**

dp.6: cold, loose snow and wind

Down to intermediate altitudes snow will fall. 10 to 25 cm of snow, and even more in some localities, will fall until Wednesday above approximately 1200 m. The wind will be light to moderate. The fresh snow and the wind-drifted snow will be deposited on the wet surface of an old snowpack. This applies in particular on sunny slopes below approximately 2800 m, as well as on shady slopes below approximately 2400 m.

### Tendency

As a consequence of mild temperatures and solar radiation the snowpack consolidated on Thursday. Gradual increase in danger of wet avalanches.



## Danger Level 1 - Low



**Tendency: Constant avalanche danger** →  
on Thursday 11 04 2024



Wind slab



2400m

Snowpack stability: **poor**

Frequency: **few**

Avalanche size: **small**

As a consequence of the new snow there will be only a slight increase in the danger of dry avalanches.

The fresh wind slabs can be released by a single winter sport participant in isolated cases. Mostly avalanches are small.

Temporary decrease in danger of wet avalanches as the temperature drops.

On steep grassy slopes mostly small gliding avalanches are possible.

## Snowpack

### Danger patterns

dp.6: cold, loose snow and wind

Up to 20 cm of snow will fall until Wednesday. Fresh snow and the wind-drifted snow will be deposited on the wet surface of an old snowpack. The wind will be moderate to strong. The fresh wind slabs are mostly only small.

As a consequence of falling temperatures the snowpack will consolidate.

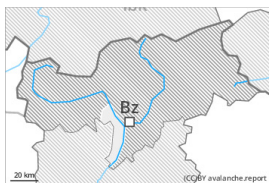
Below approximately 1800 m from a snow sport perspective, in most cases insufficient snow is lying.

## Tendency

Rapid decrease in danger of dry avalanches. Gradual increase in danger of wet avalanches.



## Danger Level 1 - Low



**Tendency: Constant avalanche danger** →  
on Thursday 11 04 2024

The avalanche conditions are generally favourable.

Temporary decrease in danger of wet avalanches as the temperature drops. Avalanches are small.

On steep grassy slopes small gliding avalanches are possible.

### Snowpack

Some snow will fall in some regions. As a consequence of falling temperatures the snowpack will consolidate. Hardly any snow is lying at low and intermediate altitudes.

### Tendency

Increase in danger of wet avalanches.