



Danger Level 2 - Moderate



Tendency: Constant avalanche danger →
 on Friday 12 04 2024



Wind slab

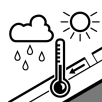


2200m

Snowpack stability: **poor**

Frequency: **some**

Avalanche size: **medium**



Wet snow

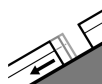


2800m

Snowpack stability: **very poor**

Frequency: **some**

Avalanche size: **medium**



Gliding snow



2600m

Frequency: **few**

Avalanche size: **medium**

Decrease in danger of dry avalanches as a consequence of warming.

The fresh snow and the mostly small wind slabs can still be released in some cases on very steep shady slopes above approximately 2200 m. In isolated cases avalanches can release the saturated snowpack and reach medium size. This applies in particular on steep sunny slopes below approximately 2800 m, as well as on steep shady slopes below approximately 2400 m.

As a consequence of warming and solar radiation, the natural activity of medium loose snow avalanches will appreciably increase, especially in extremely steep terrain in all aspects. Apart from the danger of being buried, restraint should be exercised in particular in view of the danger of avalanches sweeping people along and giving rise to falls.

On steep grassy slopes more frequent medium-sized gliding avalanches are possible below approximately 2600 m. This applies in particular on steep, snow-free grassy slopes below approximately 2600 m. Areas with glide cracks are to be avoided.

Snowpack

Danger patterns

dp.2: gliding snow

Over a wide area 10 to 20 cm of snow, and even more in some localities, has fallen. Less snow than expected has fallen in the Vinschgau.

After a clear night, it will be sunny and very mild during the day. These meteorological conditions will bring about a substantial stabilisation of the near-surface layers on steep shady slopes.

Steep east, south and west facing slopes: Here, the new snow layer becomes completely wet during the course of the day.



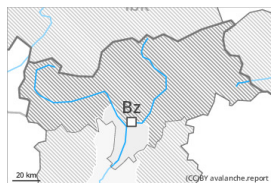
The old snowpack is wet. This applies in particular on sunny slopes below approximately 2800 m, as well as on shady slopes below approximately 2400 m.

Tendency

Increase in danger of wet avalanches as a consequence of warming.



Danger Level 1 - Low



Tendency: Constant avalanche danger →
on Friday 12 04 2024

The weather will be very warm. The danger of wet avalanches will increase during the day.

As a consequence of warming and solar radiation, the activity of wet avalanches will gradually increase. On steep grassy slopes mostly small gliding avalanches are possible.

Snowpack

Danger patterns

dp.10: springtime scenario

dp.2: gliding snow

Some snow fell on Wednesday in some localities. The surface of the snowpack will freeze very little and will already be soft in the early morning.

Below approximately 1800 m from a snow sport perspective, in most cases insufficient snow is lying.

Tendency

Conditions are favorable concerning avalanche hazard.