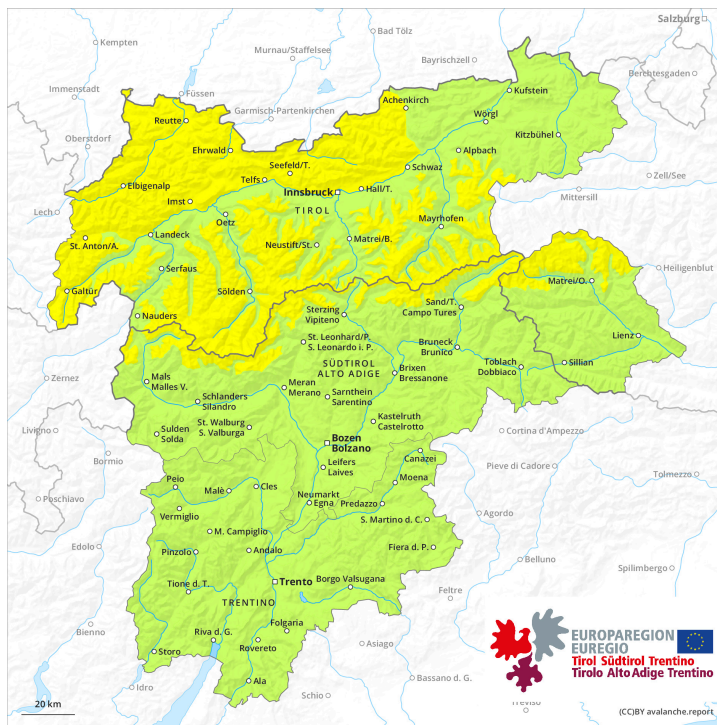
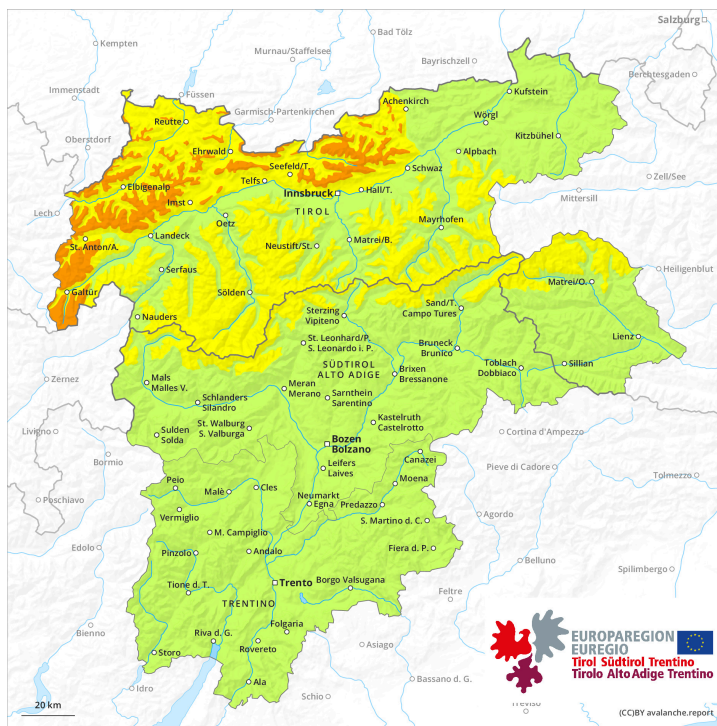




**earlier**



**later**



## Danger Level 3 - Considerable

earlier



**Tendency: Constant avalanche danger** →  
 on Saturday 20 04 2024



Wind slab



2000m

Snowpack stability: **poor**

Frequency: **some**

Avalanche size: **medium**



Gliding snow

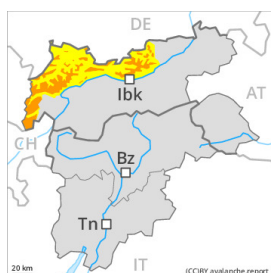


2600m

Frequency: **few**

Avalanche size: **large**

later



**Tendency: Constant avalanche danger** →  
 on Saturday 20 04 2024



Wind slab



2000m

Snowpack stability: **poor**

Frequency: **some**

Avalanche size: **medium**



Gliding snow



2600m

Frequency: **some**

Avalanche size: **large**

Fresh wind slabs require caution. Increase in avalanche danger as a consequence of new snow and wind.

The fresh wind slabs can be released by a single winter sport participant in some cases in particular on very steep north and east facing slopes above approximately 2000 m. The avalanche prone locations are to be found in particular adjacent to ridgelines and in gullies and bowls.

As a consequence of new snow and wind the prevalence and size of the avalanche prone locations will increase as the day progresses. By the evening danger level 3 (considerable) will be reached above approximately 2000 m. The fresh wind slabs are to be found in all aspects. Avalanches can reach medium size.

In addition individual medium-sized and, in isolated cases, large gliding avalanches are possible. This applies on steep grassy slopes below approximately 2600 m. Areas with glide cracks are to be avoided.

On extremely steep slopes individual dry loose snow avalanches are possible, but they will be mostly small.



## Snowpack

### Danger patterns

dp.6: cold, loose snow and wind

dp.2: gliding snow

20 to 40 cm of snow, and even more in some localities, has fallen since Monday. Friday: 20 to 30 cm of snow, and even more in some localities, will fall until late in the night. The wind will be strong in some cases.

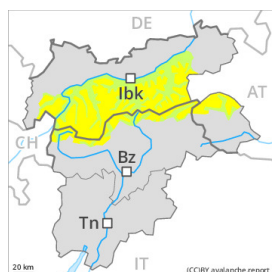
As a consequence of new snow and wind, avalanche prone wind slabs will form in some places. They are lying on soft layers above approximately 2000 m.

The old snowpack is moist and its surface consists of loosely bonded snow lying on a resilient melt-freeze crust. This applies on sunny slopes in all altitude zones, as well as on shady slopes below approximately 2600 m.

## Tendency

Fresh wind slabs represent the main danger. Gliding snow requires caution.

## Danger Level 2 - Moderate



**Tendency: Constant avalanche danger** →  
 on Saturday 20 04 2024



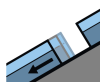
Wind slab



Snowpack stability: **poor**

Frequency: **few**

Avalanche size: **medium**



Gliding snow



Frequency: **few**

Avalanche size: **medium**

Fresh wind slabs require caution. Individual gliding avalanches can also occur.

The fresh wind slabs can be released by a single winter sport participant in isolated cases in particular on northwest to north to east facing aspects above approximately 2200 m. In high Alpine regions these avalanche prone locations are to be found in all aspects. The avalanche prone locations are to be found in particular adjacent to ridgelines and in gullies and bowls. Avalanches can reach medium size in isolated cases, in particular in the regions exposed to heavier precipitation.

As a consequence of new snow and strong wind the prevalence and size of these avalanche prone locations will increase from midday.

Individual medium-sized gliding avalanches are possible. This applies on steep grassy slopes below approximately 2600 m. Areas with glide cracks are to be avoided.

### Snowpack

**Danger patterns**

dp.6: cold, loose snow and wind

dp.2: gliding snow

Up to 20 cm of snow, and even more in some localities, has fallen since Monday. During the day: In some localities 10 to 20 cm of snow, and even more in some localities, will fall. The wind will be strong in some cases.

As a consequence of new snow and wind, wind slabs will form. They are lying on soft layers in particular on northwest to north to east facing aspects.

The old snowpack is moist and its surface consists of loosely bonded snow lying on a strong melt-freeze crust. This applies on sunny slopes in all altitude zones, as well as on shady slopes below approximately 2600 m.

### Tendency



Slight increase in danger of dry avalanches as a consequence of new snow and strong wind. The fresh wind slabs are in some cases prone to triggering. Individual gliding avalanches are possible.

## Danger Level 1 - Low



**Tendency: Constant avalanche danger** →  
on Saturday 20 04 2024



Gliding snow



2600m

Frequency: **few**

Avalanche size: **medium**

### Gliding snow requires caution.

Individual medium-sized gliding avalanches are possible. This applies in particular on steep grassy slopes below approximately 2600 m. Areas with glide cracks are to be avoided.

Fresh wind slabs require caution, especially on very steep shady slopes in high Alpine regions. Individual avalanche prone locations are to be found in particular adjacent to ridgelines and in gullies and bowls.

In steep terrain there is a danger of falling on the hard crust.

### Snowpack

#### Danger patterns

dp.2: gliding snow

Some snow will fall in some localities. The old snowpack is moist and its surface has a strong melt-freeze crust. This applies on sunny slopes in all altitude zones, as well as on shady slopes below approximately 2600 m.

In particular below the tree line only a little snow is now lying.

### Tendency

Low avalanche danger will persist. Gliding snow requires caution.

## Danger Level 1 - Low



**Tendency: Constant avalanche danger** →  
on Saturday 20 04 2024

### Low avalanche danger will prevail.

On steep grassy slopes individual small to medium-sized gliding avalanches are possible. Areas with glide cracks are to be avoided.

Fresh wind slabs are only small but can be released in isolated cases. The avalanche prone locations are to be found in particular adjacent to ridgelines and in gullies and bowls above approximately 2200 m. Restraint should be exercised because avalanches can sweep people along and give rise to falls.

### Snowpack

#### Danger patterns

dp.2: gliding snow

10 to 20 cm of snow has fallen since Monday. Over a wide area 5 to 10 cm of snow will fall on Friday. The wind will be strong in some cases.

As a consequence of new snow and wind, mostly shallow wind slabs will form. They will be deposited on soft layers on north and east facing slopes.

The old snowpack is moist and its surface consists of loosely bonded snow lying on a strong melt-freeze crust. Below approximately 1800 m only a little snow is lying.

### Tendency

Slight increase in danger of dry avalanches as a consequence of new snow and strong wind. The fresh wind slabs are in isolated cases prone to triggering. Individual gliding avalanches are possible.

## Danger Level 1 - Low



**Tendency: Constant avalanche danger** →  
on Saturday 20 04 2024



Gliding snow



2600m

Frequency: **few**

Avalanche size: **medium**

### Gliding snow requires caution.

Individual medium-sized gliding avalanches are possible. This applies in particular on steep grassy slopes below approximately 2600 m. Areas with glide cracks are to be avoided.

Fresh wind slabs require caution, especially on very steep shady slopes in high Alpine regions. Individual avalanche prone locations are to be found in particular adjacent to ridgelines and in gullies and bowls. In steep terrain there is a danger of falling on the hard crust.

### Snowpack

#### Danger patterns

dp.2: gliding snow

Some snow has fallen in some localities. The snowpack is wet and its surface has a strong crust. This applies on sunny slopes in all altitude zones, as well as on shady slopes below approximately 2600 m. In particular below the tree line only a little snow is now lying.

### Tendency

Saturday: Especially in the regions of the north exposed to the foehn wind some new snow. The wind will be strong to storm force over a wide area. Low avalanche danger will prevail.